

TZ 90 90



ASSEMBLE MANUAL



JINGSHI R/C MODEL

CHENGDU JINSHI R/C MODEL DEVELOPMENT CO.,LTD

MADE IN CHINA

CONTENTS

INTRODUCTION.....	II
IMPORTANT NOTES AND SAFETY CHECK BEFORE FLY.....	II-III
WARNING AND TECHNICAL PARAMETERS.....	III-IV
1. MAIN FRAME ASSEMBLY 1.....	P1
1-1 CLUTCH BELL ASSEMBLY.....	P2
1-2 GUIDE PULLEY ASSY ASSEMBLY.....	P2
2. MAIN FRAME ASSEMBLY 2.....	P3
2-1 ELEVATOR ARM ASSEMBLY.....	P4
3. MAIN FRAME ASSEMBLY 3.....	P5
3-1 T-ARM LEBET ASSEMBLY.....	P6
3-2 TAIL BELL CRANK INSTALLATION.....	P6
4. MAIN FRAME ASSEMBLY 4.....	P7
4-1 FUEL TANK ASSEMBLY.....	P7
5. MAIN FRAME ASSEMBLY 5.....	P8
6. MAIN FRAME ASSEMBLY 6.....	P9
7. MAIN FRAME ASSEMBLY 7.....	P9
8. MAIN FRAME ASSEMBLY 8.....	P10
8-1 DOUBLE MAIN DRIVE GEAR ASSEMBLY.....	P10
9. COOLING FAN AND ENGINE ASSEMBLY.....	P11
10. LANDING STRUT ASSEMBLY.....	P12
11. MAIN SHAFT ASSY ASSEMBLY.....	P13
11-1 SWASH PLATE ASSEMBLY.....	P14
11-2 WASHOUT BASE ASSEMBLY.....	P14
11-3 MIXING ARM ASSEMBLY.....	P15
11-4 MAIN BLADE HOLDER ASSEMBLY.....	P15
11-5 ROTOR HEAD ASSEMBLY.....	P16
11-6 ROTOR HEAD、 MIXING ARM AND MAIN BLADE HOLDER ASSEMBLY.....	P17
12. CONTROL ROD INSTALLATION.....	P18
13. TALL BOOM BRACE INSTALLATION	P19
13-1 TAIL CASE ASSEMBLY.....	P20
13-2 TAIL BLADE ASSEMBLY.....	P21
13-3 TAIL CASE AND TAIL ASSEMBLY.....	P22
14. CONTROL TOD ASSEMBLY (L).....	P23
15. CONTROL TOD ASSEMBLY (R).....	P24
16. CANOPY ASSEMBLY.....	P25

17. 140 CCPM ROD.....	P25
18. REMOTE CONNECTION.....	P26
19. TZ V2 90 CLASS R/C HELICOPTER PARTS PICTURE	P27
20. TZ V2 90 CLASS R/C HELICOPTER PARTS LIST.....	P31

A letter to customers

Dear Customers:

Thank you for your selection of our TZV290 helicopters. Getting your preference and patronage is our company's honour. At the same time of thanking you for your buying our products, our company sincerely serve you. It's our unshrinkable responsibility, letting you to enjoy best after-sales service. In accordance with the business concept the "most sincere service can move god" , For your more convince and ease of using this model helicopter, Please read this instruction manual in detail.

Flying model helicopter is a sport & leisure activity with strong technique. It is not a toy. Therefore, if you possess no good base of remote –control technique, it is suggested that you don't be eager to start the model helicopter for fly in sky .you should understand the performance of this product, learn from experts or be technical trained in model helicopter field and step by step become a excellent pilot of this model helicopter. We believe, that after you will have mastered the remote-control technique of this product, you will fondle admiringly, since it will bring you limitless joy.

CHENGDU JINGSHI R/C MODEL DEVELOPMENT CO., LTD.

Important Notes

R/C helicopters, including the TZV290 Nitro are not toys. R/C helicopter utilizes various high-tech products and technologies to provide superior performance. Improper use of this product can result in serious injury or even death. Please read this manual carefully before using and make sure to be conscious of your own personal safety as well as others and your environment when operating all TZ products. Manufacturer and seller assume no liability for the operation or the use of this product. Intending for use only by adults who have remote control helicopters flying experience at a legal flying field. After the sale of this product we can't maintain any control over its operation or usage.

We recommend that you obtain the assistance of an experienced pilot before attempting to fly our products for the first time. A local expert is the best way to properly assemble, setup, and fly your model for the first time. The TZ V290 Nitro requires a certain degree of skill to operate, and is a consumer item, any damage or dissatisfaction as a result of accidents or modifications are not covered by any warrantee and can't be returned for repair or replacement, please contact our distributors for free technical consultation and parts at discounted rates when you experience problems during operation or maintenance.

Safety Notes

Fly only in safe areas, away from other people. Don't operate R/C helicopter within the vicinity of homes or crowds of people, R/C helicopter prone to accidents, failures, and crashes due to a variety of reasons including, lack of maintenance, pilot error and radio interference. Pilots are responsible for their actions

and damage or injury occurring during the operation or as of a result of R/C helicopter models.

Safety check before fly

1. Before every time fly, you must perform a complete check to the body and mechanical part of this model helicopter, including every link head, every screw bolt, if a problem is found, you must immediately maintain it and exchange components.
2. Before every time fly, you must check every movement direction of the model helicopter and movement amount being formed for normal. You must form such habit of operation sequence, before starting model helicopter, at first switch off receiver.
3. Before every time fly, you must check the battery of remote controller and receiver for sufficiency for fly and check the servo of it for normal in order to avoid helicopter's danger out of control.
4. Before fly, please investigate clearly whether if frequencies of remote-control of your model plane friends on fly identical to that of your helicopter remote-control. If identical please consult about fly sequence with your friend. One identical frequency start model planes at the same time, it will cause the danger of controller failure of both parties.
5. Before starting helicopter, please confirm if the batteries of remote control and receiver are switched on, if the movement is normal, if throttle position is in lowest place, if the switcher for flameout and landing is switched off and if other passages' switchers are back to normal positions.
6. After model helicopter is started, the rotation speeds of main rotor and tail rotor are very high, so anyone must be 10meters away from the helicopter.
7. As a acceptable operator of remote –controlled helicopter, you must have safety concept and responsibility sense. Your fly must be responsible for safety of lives and properties of you selves and other people.

Warning

1. LOCATE AN APPROPRIATE LOCATION

R/C helicopters fly at high speed, thus posing a certain degree at potential danger. Choose a legal flying field consisting of flat, smooth ground without obstacles. Don't fly near buildings, high voltage cables, or trees to ensure the safety of yourself, others and your model. For the first practice, please choose a legal flying field and can use a training skid to fly for reducing the damage. Don't fly your model in inclement weather, such as rain, wind, snow or darkness.

2. PREVENT MOISTURE

R/C models are composed of many precision electrical components. It is critical to keep the model and associated equipment away from moisture and other contaminants. The introduction or exposure to water or moisture in any form can cause the model to malfunction resulting in loss of use, or a crash. Don't operate or expose to rain or moisture.

3. PROPER OPERATION

Please use the replacement of parts on the manual to ensure the safety of instructors. This products is for R/C model, so don't use for other purpose.

4. OBTAIN THE ASSISTANCE OF AN EXPERIENCED PILOT

The guidance provided by an experienced pilot will be invaluable for the assembly, tuning, trimming, and actual first flight. (Recommend you to practice with computer-based flight simulator).

5. SAFE OPERATION

Operate this unit within your ability. Don't fly under tired condition and improper operation may cause in danger.

6. ALWAYS BE AWARE OF THE ROTATING BLADES

During the operation of the helicopter, the main rotor and tail rotor will be spinning at a high rate of speed. The blades are capable of inflicting serious bodily injury and damage to the environment. Be conscious of your actions, and careful to keep your face, eyes, hands, and loose clothing away from the blades. Always fly the model at a safe distance from yourself and others, as well as surrounding objects. Never take your eyes off the model or leave it unattended while it is turned on, immediately turn off the model and transmitter when you have landed the model.

7. KEEP AWAY FROM HEAT

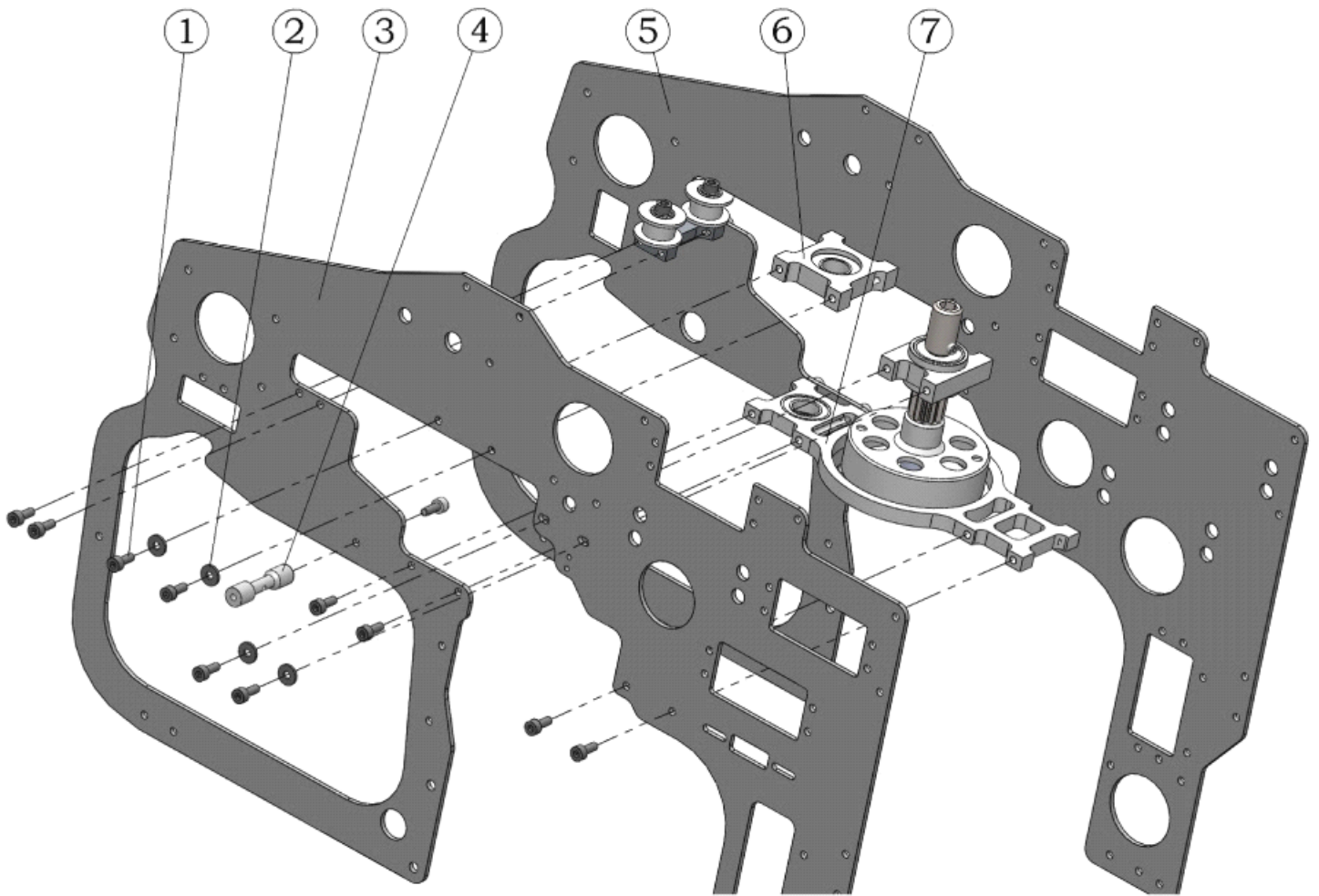
R/C models are made up various forms of plastic. Plastic is very susceptible to damage or deformation due to extreme heat and cold climate. Make sure not to store the model near any source of heat such as an oven, or heater. It is best to store the model indoors, in a climate-controlled, room temperature environment.

8. All product descriptions and specifications are subject to change without notice! If you have any suggestion can contact us by the following way, www.jingshimodel@vip.163.com! Our website is www.jsmodel.com. Thanks for your trust on our products!

TECHNICAL PARAMETERS

SPECIFICATION	TZ V2 90
LENGTH	1360mm
HEIGHT	450mm
WIDTH	185mm
GEAR RATIO	STANDARD 8.27 : 1 : 4.66
PINION GEAR	11T
MAIN GEAR	STANDARD 91T
MAIN ROTOR DIAMETER	STANDARD 1523mm-1563mm
TAIL ROTOR DIAMETER	265mm
MAIN ROTOR LENGTH	680mm-710mm
FULL EQUIPPED WEIGHT	4600g

1. MAIN FRAME ASSEMBLY 1



Flat Washer Φ 3x8x1 (4pcs)



Socket Screw M3x8 (20pcs)



Bearing d10xD22xW6 (1pcs)

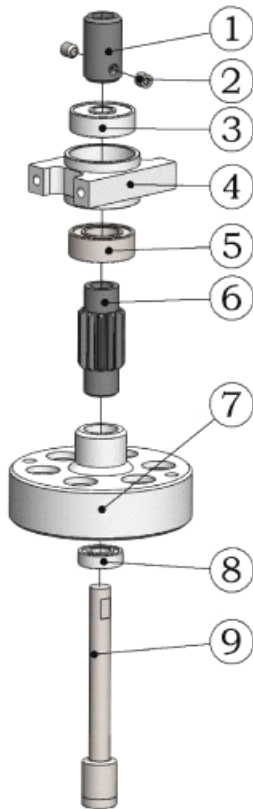


Bearing d10xD19xW5 (1pcs)

No.	Qty	Item No.	Parts Name
1	21	503-005	Socket Screw M3x8
2	4	513-011	Flat Washer Φ 3x8x1
3	1	130-037	Main Frame(R)
4	1	155-065	Fuselage Pillar
5	1	130-038	Main Frame(L)
6	1	TZ1821	Main Shaft Bearing Case
7	1	TZ1820	Strengthen Main Shaft Bearing Case

NOTE: The assembly of side left is the same as side right!

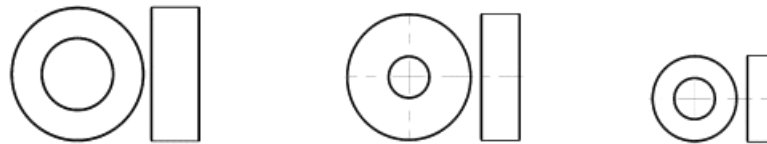
1-1 CLUTCH BELL ASSEMBLY



No.	Qty	Item No.	Parts Name
1	1	122-080	Starter Coupling
2	2	507-025	Set Screw M4x5
3	1	524-009	Bearing d6xD19xW6
4	1	130-005	Start Shaft Bearing Block
5	1	528-008	Bearing d10xD19xW7
6	1	130-006	Drive Gear (11T)
7	1	129-056	Clutch Liner
8	1	524-005	Bearing d6xD13xW5
9	1	130-007	Starter Shaft

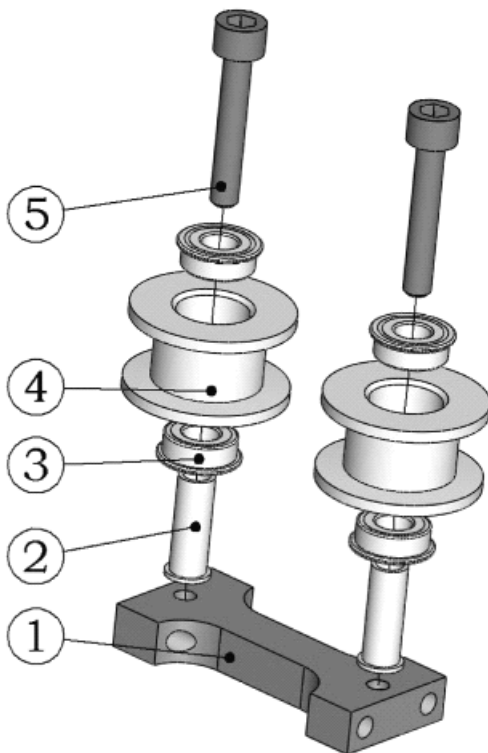


Set Screw M4x5 (2pcs)



Bearing d10xD19xW7 (1pcs)/d6xD19xW6 (1pcs)/ d6xD13xW4 (1pcs)

1-2 GUIDE PULLEY ASSY ASSEMBLY



No.	Qty	Item No.	Parts Name
1	1	154-026	Pulley Assy Mount
2	2	123-013	Collar d3xD4xW11.2xL0.5
3	4	550-005	Bearing d4xD8xW3(F)
4	2	152-014	Guide Pulley
5	2	503-012	Socket Screw M3x18



Guide Pulley (2pcs)



Bearing d4xD8xW3 (F) (4pcs)

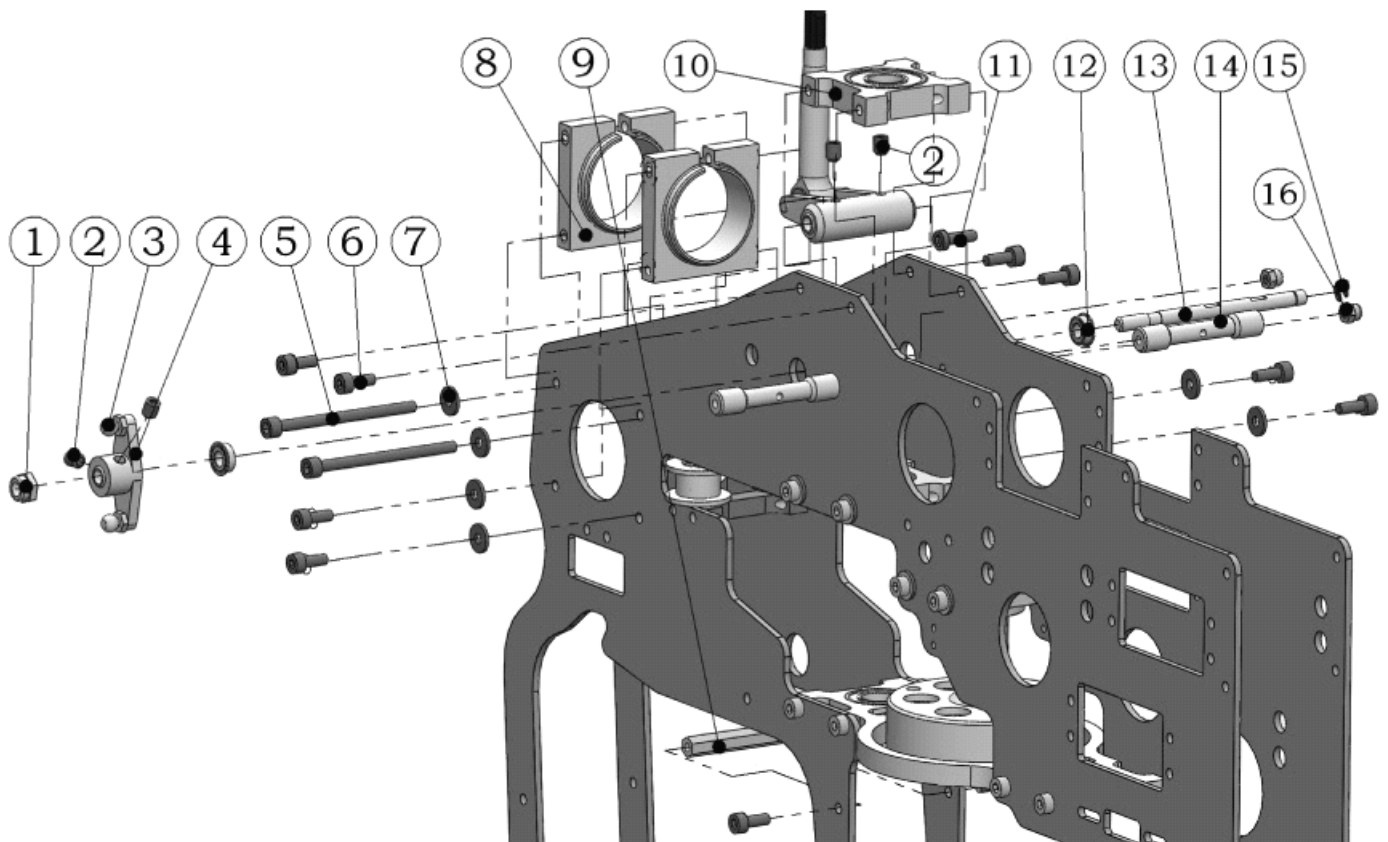


Socket Screw M3x18 (2pcs)

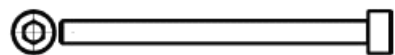


Collar d3xD4xW11.2xL0.5 (2pcs)

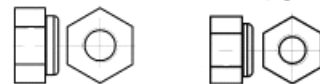
2. MAIN FRAME ASSEMBLY 2



No.	Qty	Item No.	Parts Name
1	1	511-002	Lock Nut M4
2	4	507-025	Set Screw M4x5
3	2	122-056	Stainless Steel Linkage Ball
4	1	154-061	Elevator Arm(B)
5	2	503-020	Socket Screw M3x45
6	8	503-005	Socket Screw M3x8
7	6	513-011	Flat Washer Φ 3x8x1
8	2	130-009	Metal Tail Boom Holder
9	1	154-049	Metal Frame Spacer
10	1	TZ1821	Main Shaft Bearing Case
11	2	503-006	Socket Screw M3x10
12	2	550-005	Bearing d4xD8xW3(F)
13	1	154-067	Control Lever Shaft
14	2	152-028	Metal Support Pillar
15	1	515-010	Retaining Ring Φ 4
16	2	511-001	Lock Nut M3



Socket Screw M3x45 (4pcs)



Lock Nut M4 (1pcs)/M3 (4pcs)



Set Screw M4x5 (2pcs)



Stainless Steel Linkage Ball (2pcs)



Flat Washer Φ 3x8x1 (6pcs)

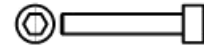
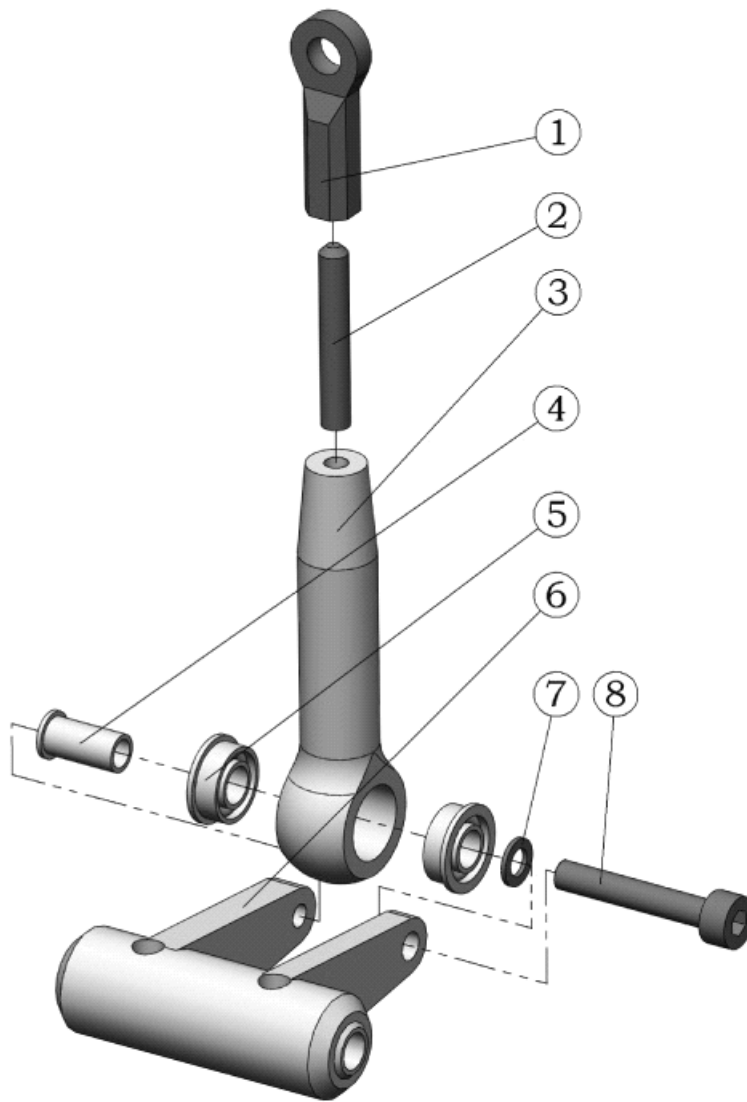


Retaining Ring Φ 4 (1pcs)



Bearing d4xD8xW3 (F) (2pcs)

2-1 ELEVATOR ARM ASSEMBLY



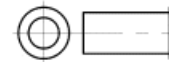
Socket Screw M3x18 (1pcs)



Socket Screw M3x20 (1pcs)



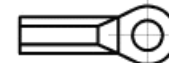
Bearing d4xD8xW3 (F) (2pcs)



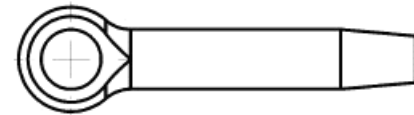
Collar d3xD4xW9.2x10.5 (1pcs)



Flat Washer Φ 3x5x0.5



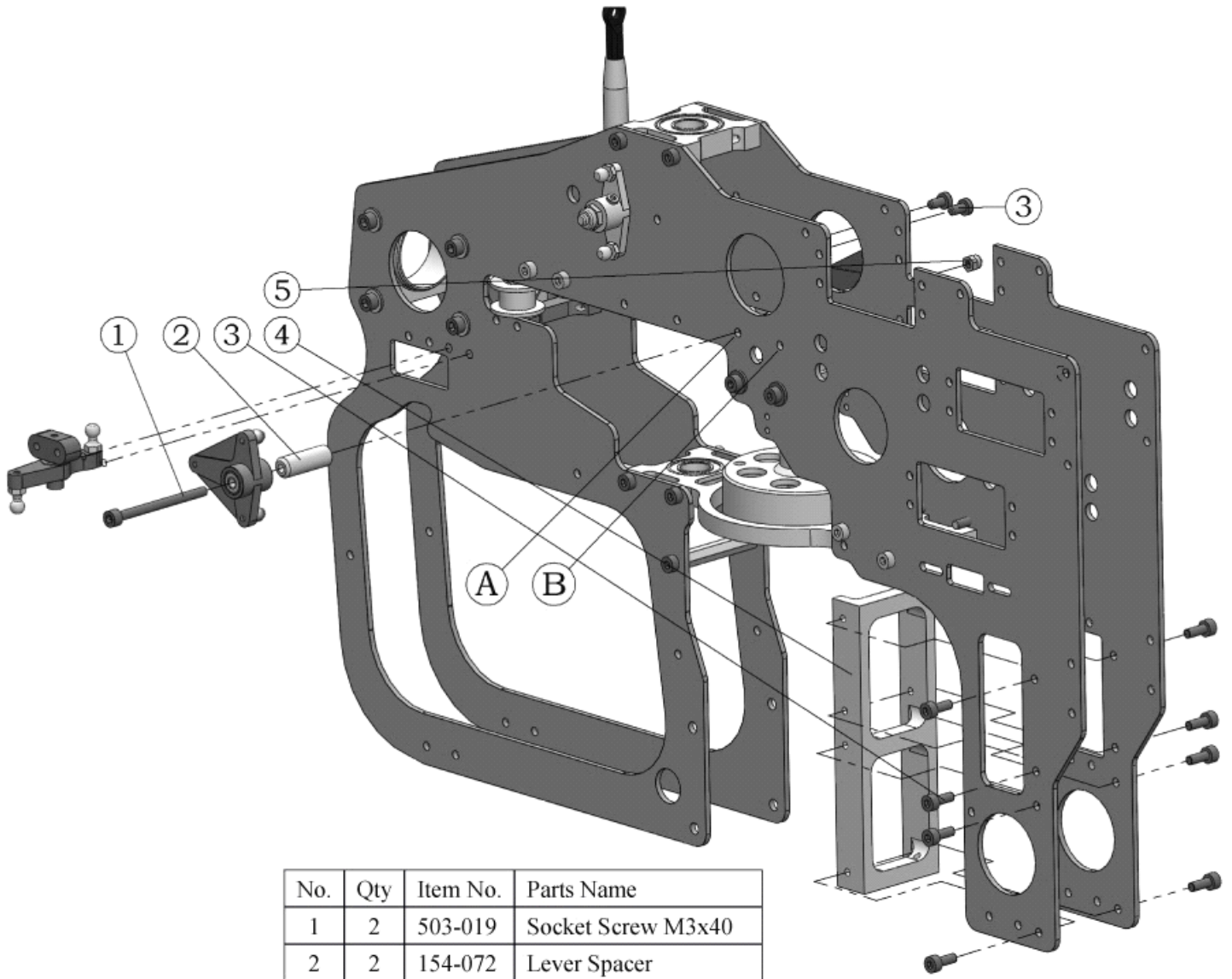
Ball Link (1pcs)



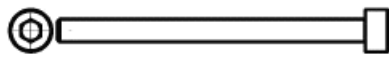
Control Lever (1pcs)

No.	Qty	Item No.	Parts Name
1	1	282-006	Ball Link
2	1	507-018	Socket Screw M3x20
3	1	130-011	Control Lever
4	1	123-011	Collar d3xD4xW9.2x10.5
5	2	550-005	Bearing d4xD8xW3(F)
6	1	154-021	Elevator Lever
7	1	513-005	Flat Washer Φ 3x5x0.5
8	1	503-012	Socket Screw M3x18

3. MAIN FRAME ASSEMBLY 3



No.	Qty	Item No.	Parts Name
1	2	503-019	Socket Screw M3x40
2	2	154-072	Lever Spacer
3	10	503-005	Socket Screw M3x8
4	4	154-046	U-Beam cross Member
5	2	511-001	Lock Nut M3



Socket Screw M3x40 (2pcs)



Socket Screw M3x8 (10pcs)



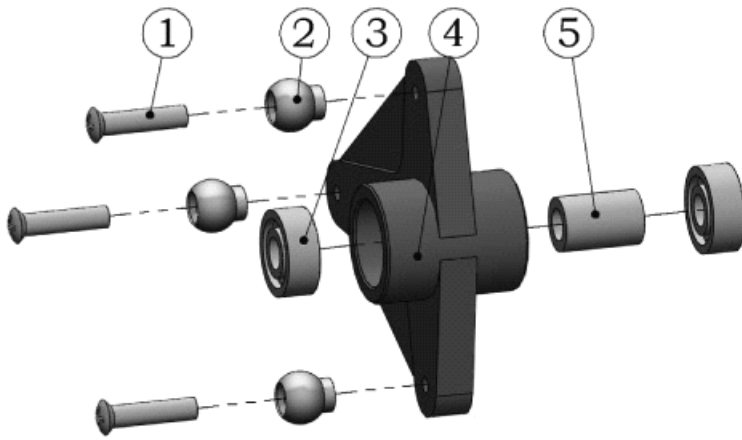
Lever Spacer (2pcs)



Lock Nut M3 (2pcs)

NOTE: POSITION A FOR 120CCPM, POSITION B FOR 140CCPM!

3-1 T-ARM LEVER ASSEMBLY



No.	Qty	Item No.	Parts Name
1	6	509-008	Link Ball Screw M2x8
2	6	122-058	Linkage Ball
3	4	521-003	Bearing d3xD8xW3
4	2	254-015	Flybar Control Lever
5	2	123-110	Collar d3xD5xW7.5



Link Ball Screw M2x8 (6pcs)



Bearing d3xD8xW3



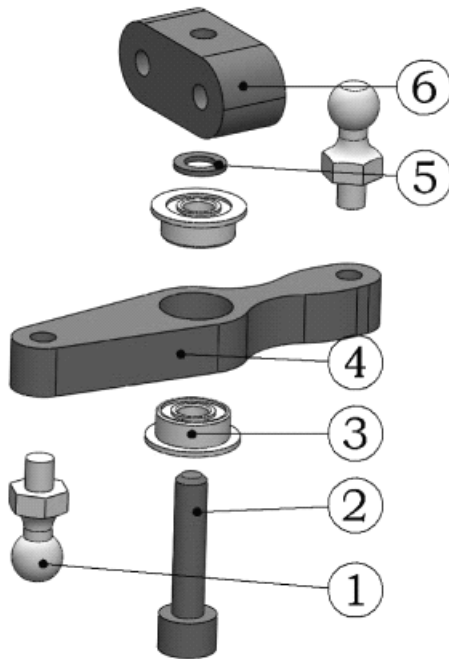
Collar d3xD5xW7.5



Linkage Ball (6pcs)

NOTE: The parts of both sides are distributed equally!

3-2 TAIL BELL CRANK INSTALLATION



No.	Qty	Item No.	Parts Name
1	2	122-108	Stainless Steel Linkage Ball
2	1	503-008	Socket Screw M3x14
3	2	550-004	Bearing d3xD7xW3(F)
4	1	254-022	Bell Crank
5	2	513-005	Flat Washer Φ 3x5x0.5
6	1	254-031	Mounting Bracket



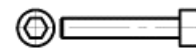
Stainless Steel Linkage Ball 122-108 (2pcs)



Bearing d3xD7xW3 (F) (1pcs)

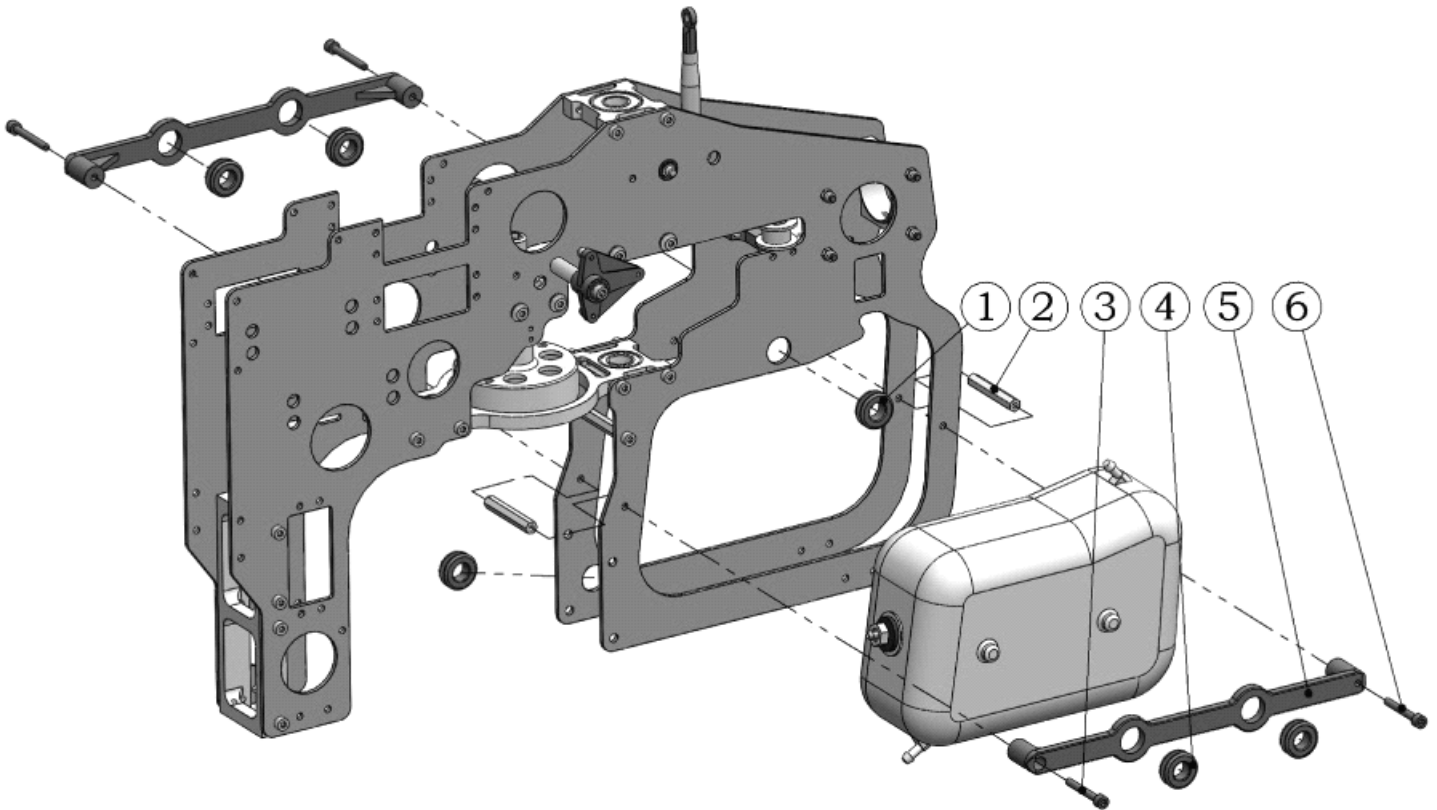


Flat Washer Φ 3x5x0.5 (1pcs)

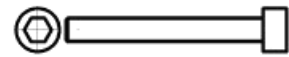


Socket Screw M3x14 (1pcs)

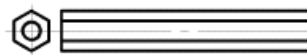
4. MAIN FRAME ASSEMBLY 4



No.	Qty	Item No.	Parts Name
1	2	290-073	Grommet
2	2	154-049	Metal Frame Spacer
3	2	503-010	Socket Screw M3×16
4	4	290-059	Fuel tank Rubber Grommet
5	2	254-038	Tank Stay
6	2	503-016	Socket Screw M3x35

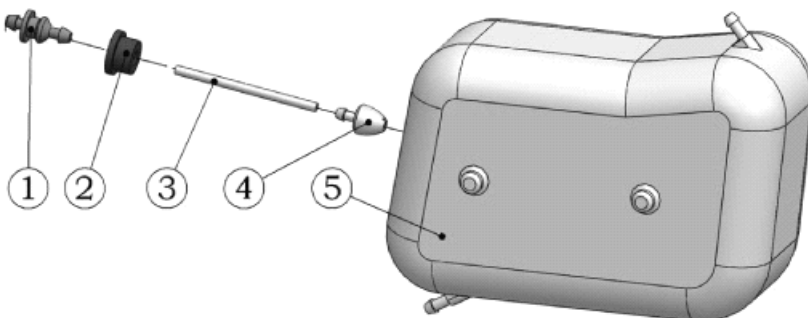


Socket Screw M3x35 (4pcs)



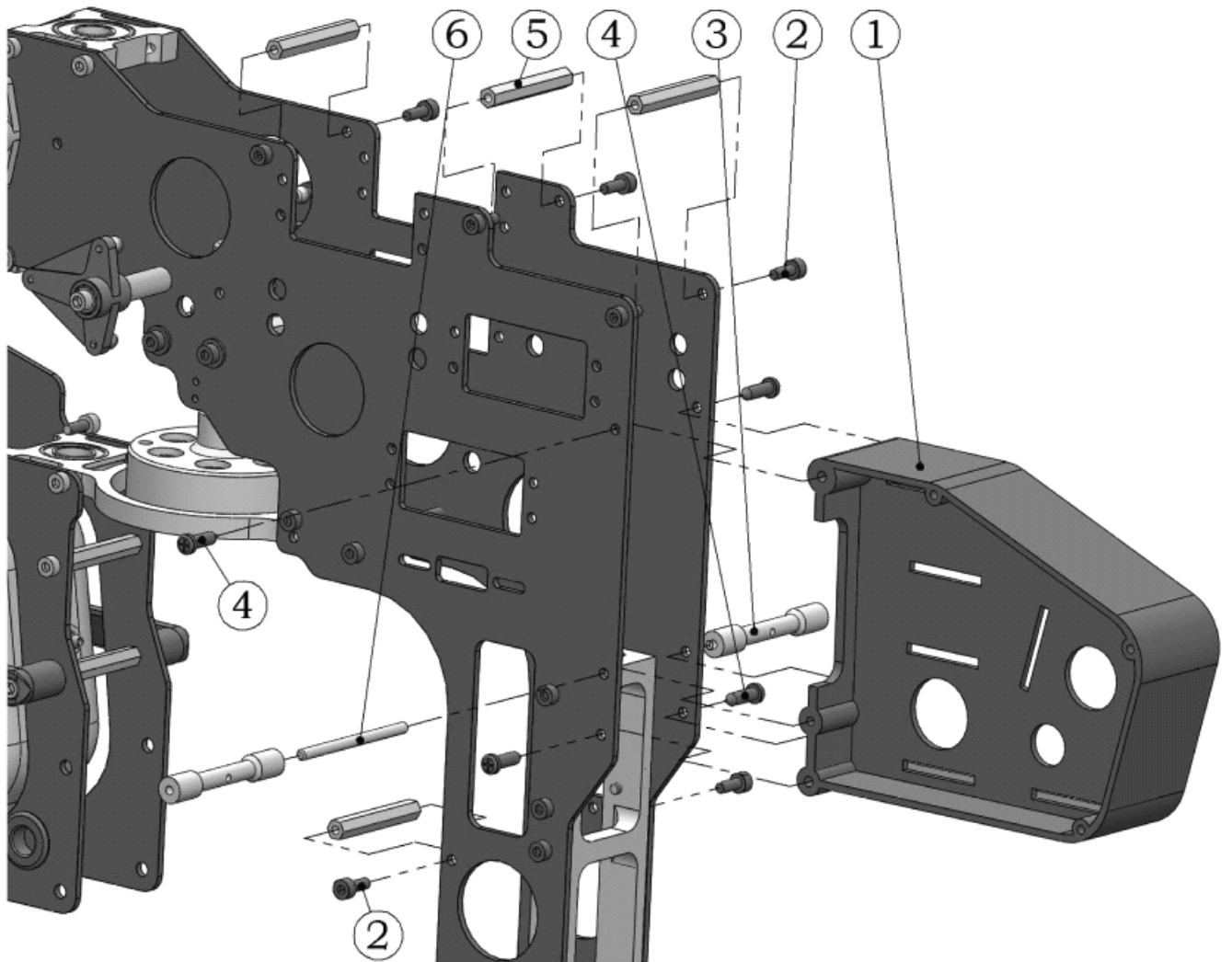
Metal Frame Spacer (2pcs)

4-1 FUEL TANK ASSEMBLY

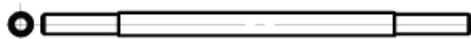


No.	Qty	Item No.	Parts Name
1	1	250-079	Fuel Tank Nipple
2	1	250-078	Fuel Tank Grommet
3	1	250-081	Silicone Fuel Tube
4	1	122-083	Clunk
5	1	290-041	Fuel Tank

5. MAIN FRAME ASSEMBLY 5



No.	Qty	Item No.	Parts Name
1	1	254-026	Frame
2	8	503-005	Socket Screw M3x8
3	2	155-029	Body Catch
4	4	510-050	Self tapping Screw M3.5x12
5	4	154-049	Metal Frame Spacer
6	1	130-014	Screwed Bolt M3x56



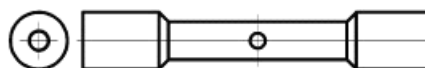
Socket Screw M3x56 (1pcs)



Metal Frame Spacer (4pcs)



Socket Screw M3x8 (8pcs)

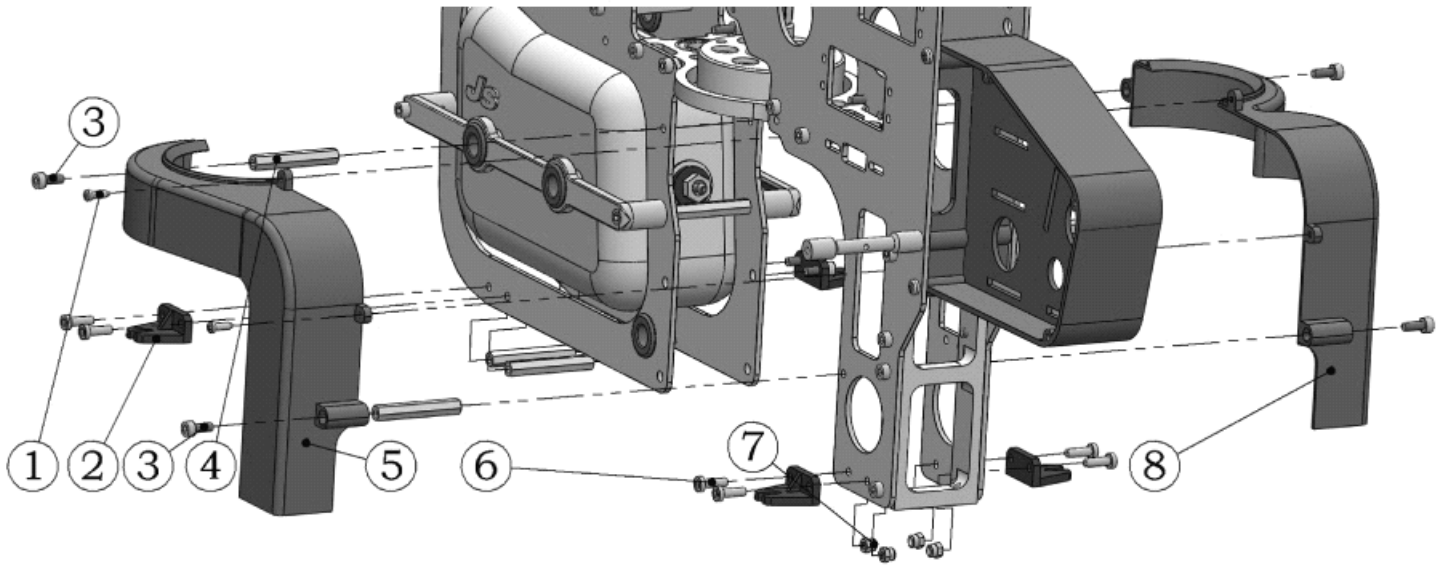


Body Catch (2pcs)



Self tapping Screw M3.5x12 (4pcs)

6. MAIN FRAME ASSEMBLY 6



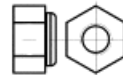
No.	Qty	Item No.	Parts Name
1	2	510-017	Self tapping Screw M2.5x8
2	4	254-011	Landing Struts Adapter
3	4	503-005	Socket Screw M3x8
4	4	154-049	Metal Frame Spacer
5	1	291-001	Fan Shroud Set(R)
6	8	503-006	Socket Screw M3x10
7	4	511-001	Lock Nut M3
8	1	291-002	Fan Shroud Set(L)



Socket Screw M3x10 (8pcs)/M3x8 (4pcs)

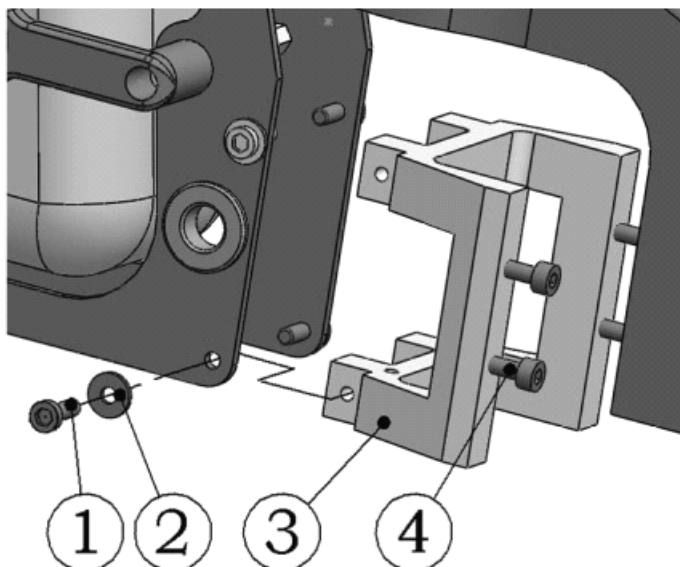


Self tapping Screw M2.5x8



Lock Nut M3 (4pcs)

7. MAIN FRAME ASSEMBLY 7



No.	Qty	Item No.	Parts Name
1	4	504-007	Socket Screw M4x10
2	4	513-013	Flat Washer Φ 4x10x1
3	1	130-015	Engine Mount
4	4	504-010	Socket Screw M4X16

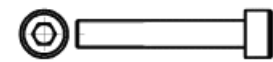
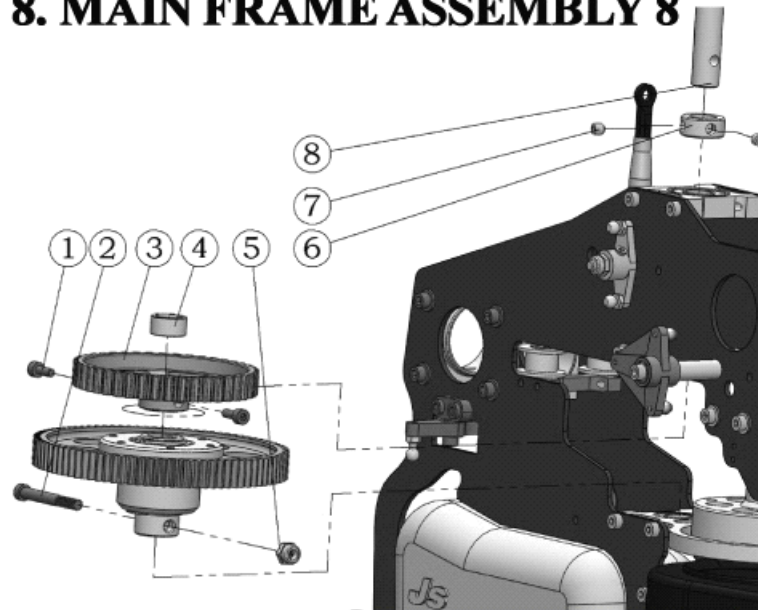


Socket Screw M4x10 (4pcs)/M4x16 (4pcs)

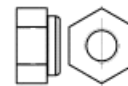


Flat Washer Φ 4x10x1 (4pcs)

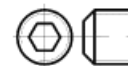
8. MAIN FRAME ASSEMBLY 8



Socket Screw M4x25 (1pcs)



Lock Nut M4 (2pcs)



Set Screw M4x4 (2pcs)

No.	Qty	Item No.	Parts Name
1	2	503-005	Socket Screw M3x8
2	1	504-016	Socket Screw M4x25
3	1	285-022	Group For Flameout and Landing (42T)
4	1	130-046	Main Shaft Bushing
5	1	511-002	Lock Nut M4
6	1	122-018	Main Shaft Lock Ring
7	2	507-024	Set Screw M4x4
8	1	130-016	Main Shaft

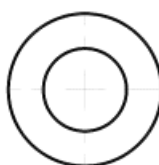
**NOTE: TAIL BELT
AROUND THE 285-022**

8-1 DOUBLE MAIN DRIVE GEAR ASSEMBLY

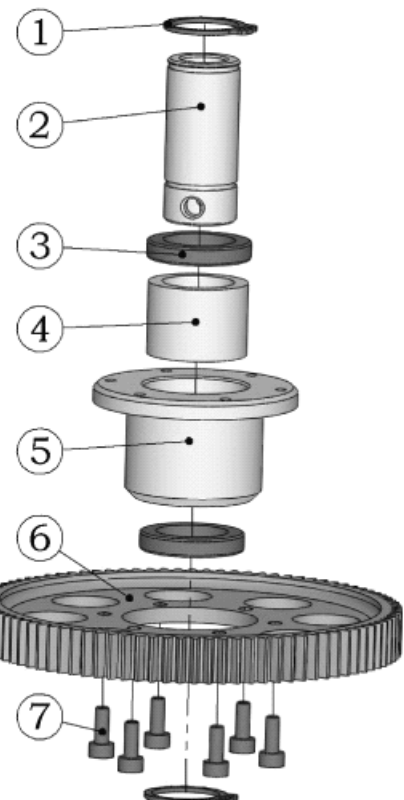
No.	Qty	Item No.	Parts Name
1	2	514-006	Retaining Ting $\Phi 15$
2	1	130-045	One Way Clutch Shaft d10xD16xL36
3	2	130-017	Copper Shim d16xD23xW4
4	1	560-005	One Way Bearing d16xD22xW16
5	1	129-017	One Way Clutch Housing Set
6	1	290-063	Main Spur Gear(91T)
7	6	503-005	Socket Screw M3x8



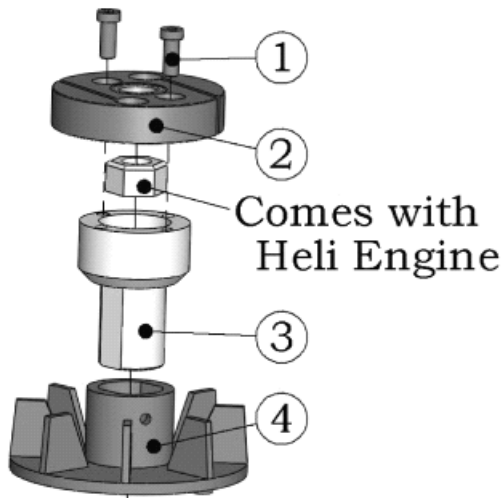
Socket Screw M3x8 (6pcs)



Copper Shim d16xD23xW4 (2pcs)



9. COOLING FAN AND ENGINE ASSEMBLY



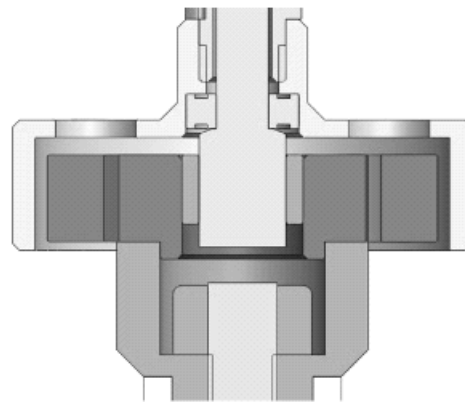
No.	Qty	Item No.	Parts Name
1	2	504-007	Socket Screw M4x10
2	1	TZ1831	Clutch
3	1	129-024	Cooling Fan Assy Mount(For O.S.)
4	1	290-006	Cooling Fan

NOTE: 1) THE COOLING FAN FOR Y.S. IS TZ1861 NOT INCLUDE THE KITS!

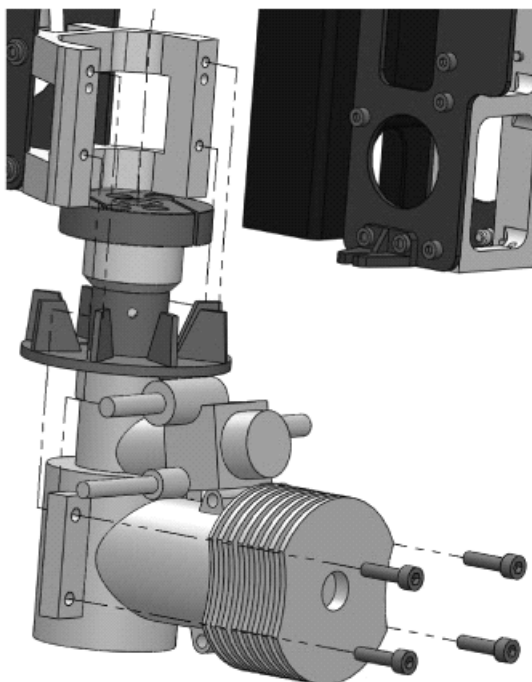
2) BEFORE YOU INSTALL THE ENGINE, YOU DON'T NEED THE FLAT WASHER OF THE ENGINE!



Socket Screw M4x10 (2pcs)

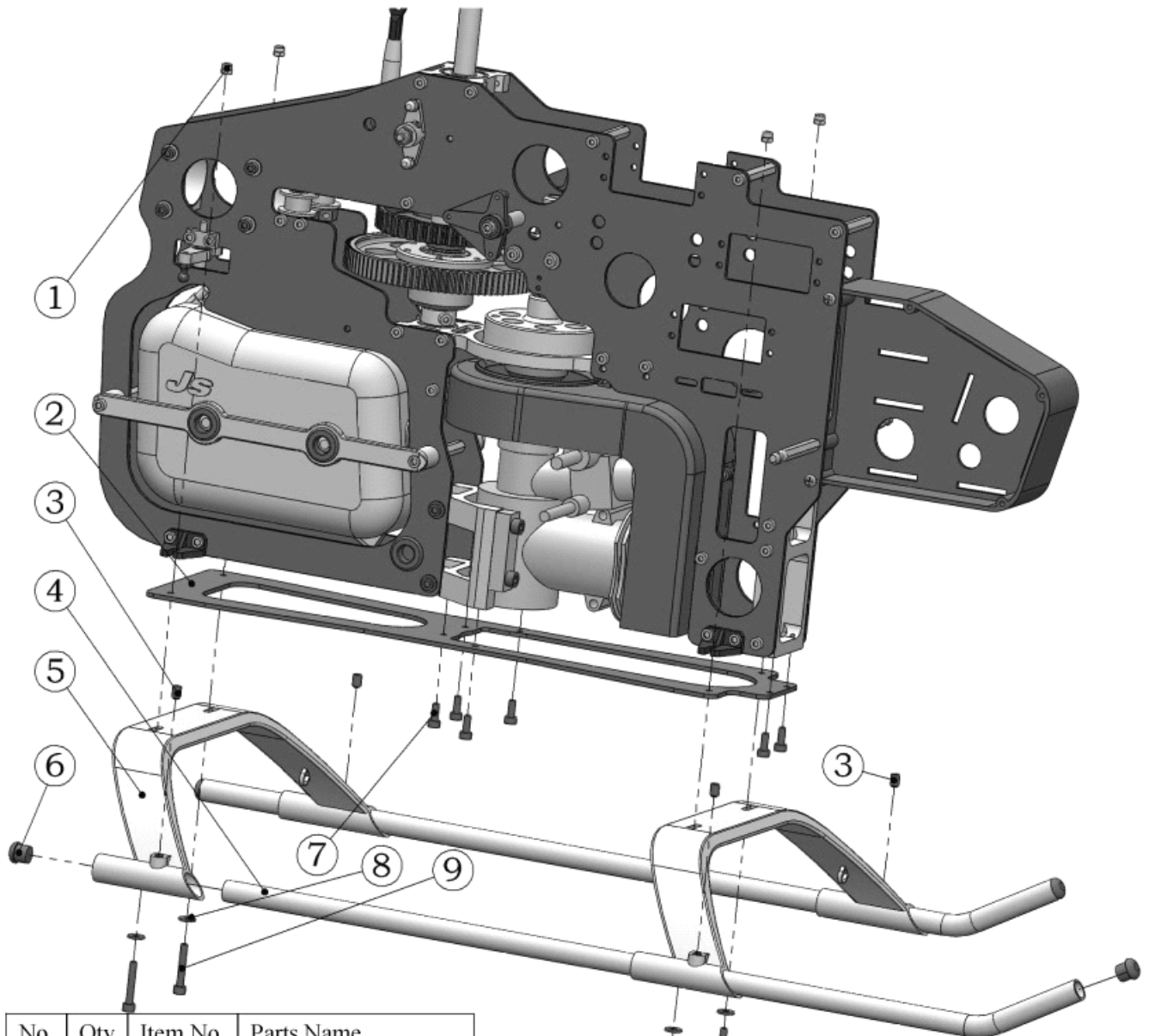


Socket Screw M4X16 (4pcs)

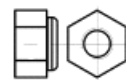


Adjust the position of engine so the bottom of the clutch assembly is flush with the bottom of the clutch bell. Also check to ensure that the clutch and clutch bell are parallel.

10. LANDING STRUT ASSEMBLY



No.	Qty	Item No.	Parts Name
1	4	511-001	Lock Nut M3
2	1	130-019	Base Plate
3	4	507-026	Socket Screw M4x6
4	2	130-020	Skid Lever
5	2	282-010	Skid Brace
6	4	290-035	Skid Cap
7	6	503-005	Socket Screw M3x8
8	4	513-011	Flat Washer Φ3x8x1
9	4	503-012	Socket Screw M3x18



Lock Nut M3 (4pcs)



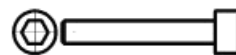
Socket Screw M4x6 (4pcs)



Flat Washer Φ3x8x1 (4pcs)

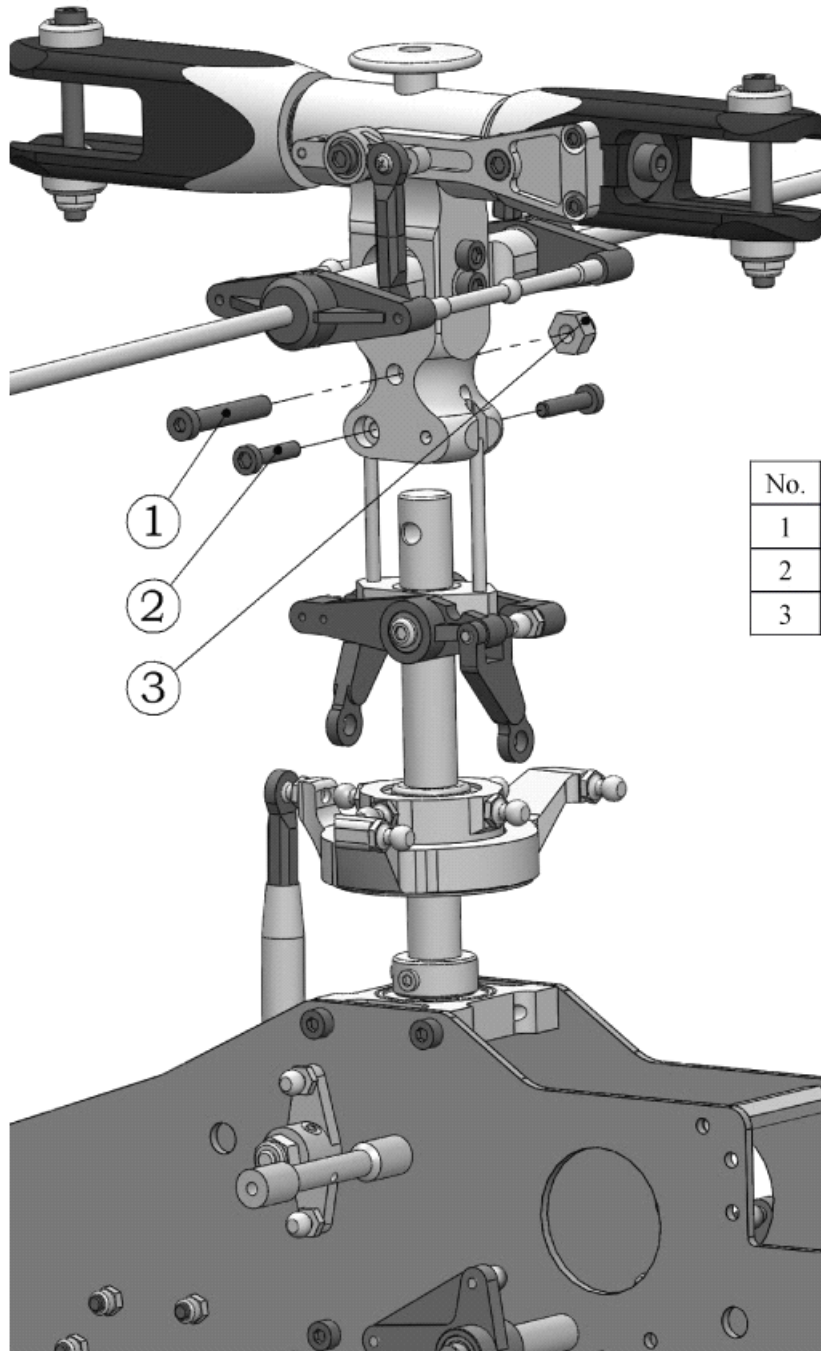


Socket Screw M3x8 (6pcs)

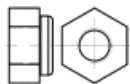


Socket Screw M3x20 (4pcs)

11. MAIN SHAFT ASSY ASSEMBLY



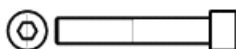
No.	Qty	Item No.	Parts Name
1	1	504-020	Socket Screw M4x24
2	2	503-009	Socket Screw M3x14
3	1	511-002	Lock Nut M4



Lock Nut M4 (1pcs)



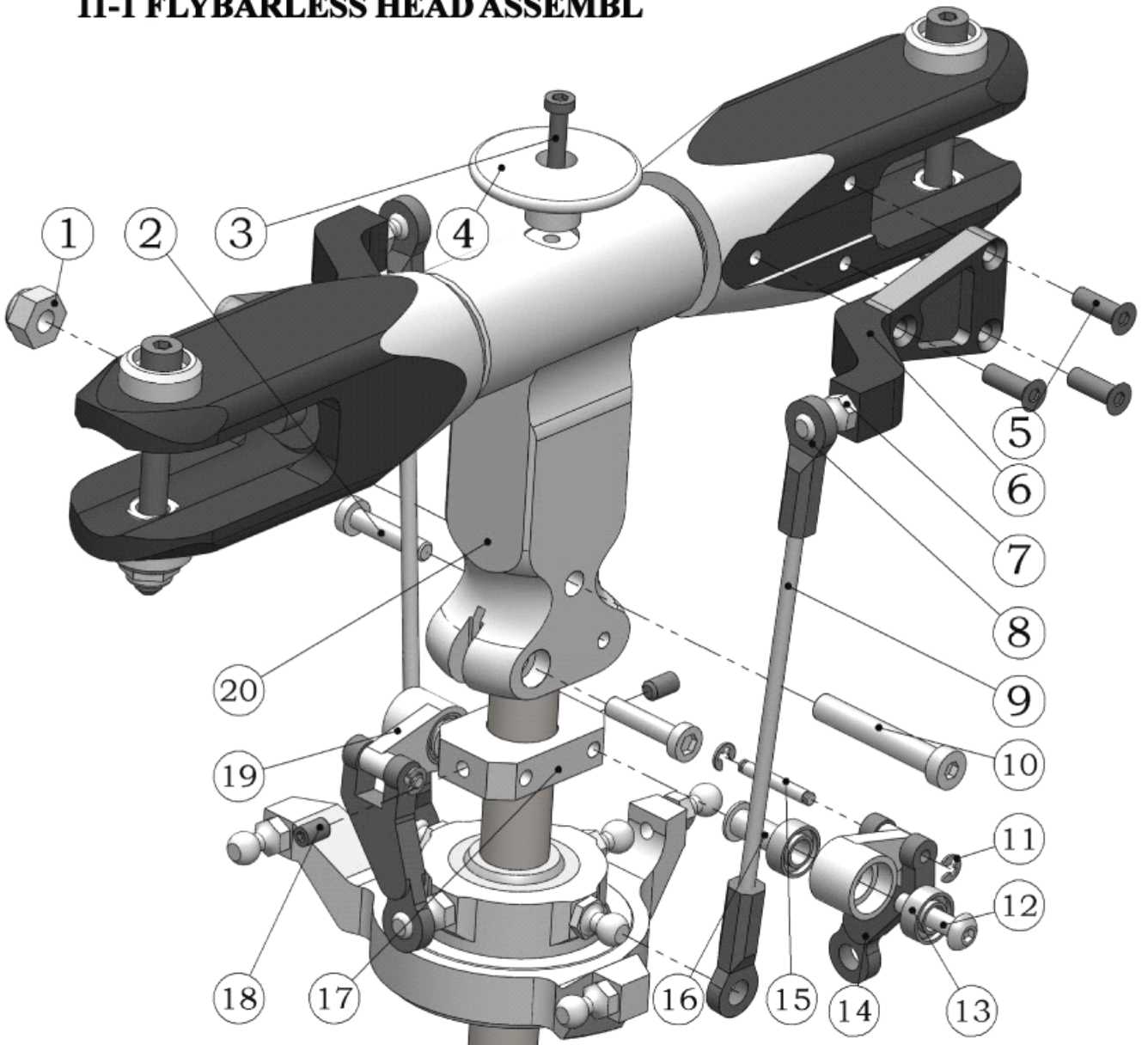
Socket Screw M3x14 (1pcs)



Socket Screw M4x24 (1pcs)

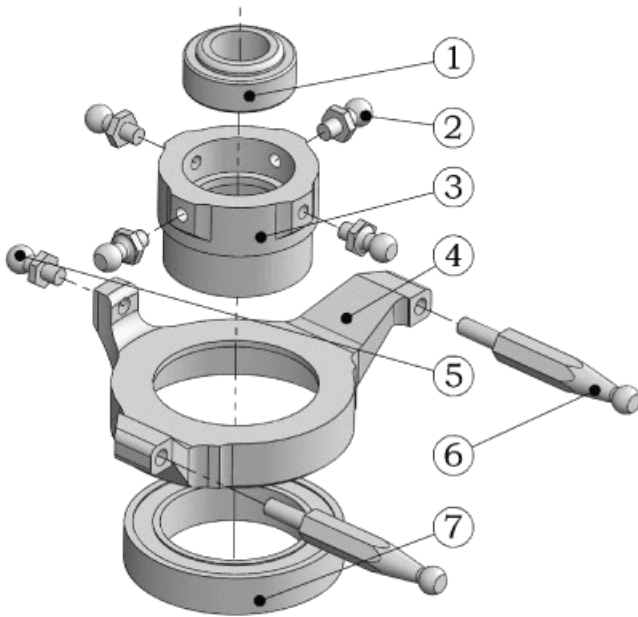
NOTE: Locking 503-009 first, then lock 504-020

11-1 FLYBARLESS HEAD ASSEMBLY



No.	Qty	Item No	Parts Name	No.	Qty	Item No	Parts Name
1	1	511-002	Lock Nut M4	11	4	515-009	Retaining Ring $\Phi 2$
2	2	503-009	Socket Screw M3x14	12	2	506-009	Socket Screw M3x12
3	1	503-006	Socket Screw M3x10	13	4	522-002	Bearing d4xD8xW3
4	1	130-025	Brake Dish	14	2	250-013	Washout Linkage
5	6	519-005	Semi-Link Ball Socket Screw M3x10	15	2	512-042	Pin $\Phi 2 \times L12$
6	2	130-053	Flybarless Main Rotor Grip Metal	16	2	123-001	Collar d3xD4xW8.5xL0.5
7	2	122-108	Stainless Steel Linkage Ball	17	1	154-105	Washout Base Metal
8	4	282-006	Ball Link	18	2	503-007	Set Screw, M3x5
9	2	610-115	Linkage Rod(L=80)	19	2	154-106	Flybarless Control Lever
10	1	504-020	Socket Screw M4x24	20	1	130-052	Main Rotor Pedestal

11-2 SWASH PLATE ASSEMBLY



No	Qty	Item No	Parts Name
1	1	570-002	Joint Bearing d10xD19xW6
2	4	130-021	Stainless Steel Linkage Ball
3	1	154-063	Swash Plate Assy
4	1	130-049	Under Swash Plate
5	1	122-108	Stainless Steel Linkage Ball
6	2	130-035	Stainless Steel Linkage Ball (140ccpm)
7	1	529-005	Bearing d25×D37×W7



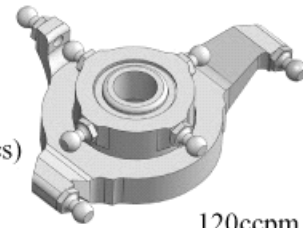
Linkage Ball (4pcs)



Stainless Steel Linkage Ball 122-108 (1pcs)



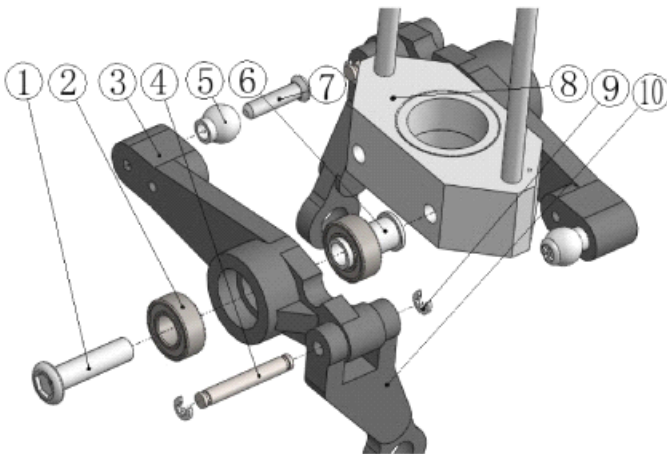
Stainless Steel Linkage Ball (For 140°) (2pcs)



120ccpm

NOTE: 120CCPM STAINLESS LINKAGE BALL USE FOR 130-036!

11-3 WASHOUT BASE ASSEMBLY



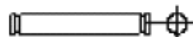
No	Qty	Item No	Parts Name
1	2	506-009	Socket Screw M3×12
2	4	522-002	Bearing d4×D8×W3
3	2	254-007	Flyer Control Lever
4	2	512-042	Pin Φ2×L12
5	2	122-058	Linkage Ball
6	2	123-001	Collar d3×D4×W8.5×L0.5
7	2	509-010	Linkage Ball Socket Screw M2×10
8	1	TZ1815	Washout Base
9	4	515-009	Retaining Ring Φ2
10	2	250-013	Washout Linkage



Linkage Ball (2pcs)



Collar d3×D4×W8.5×L0.5 (2pcs)



Bearing d4×D8×W3 (4pcs)

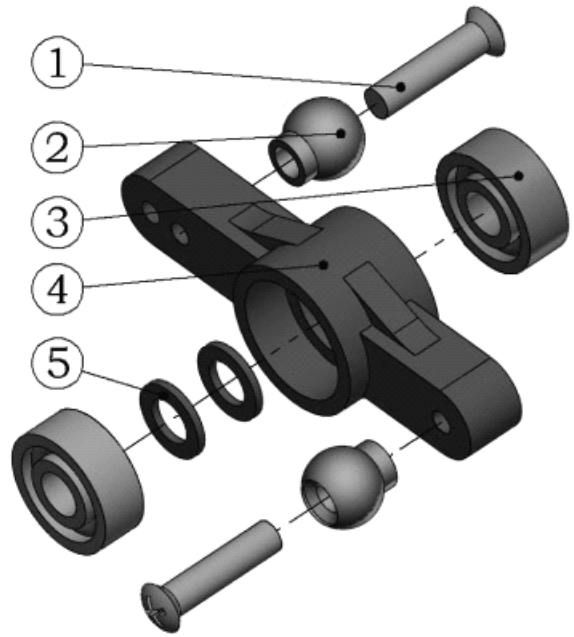
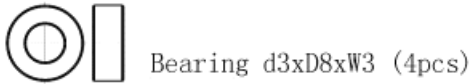
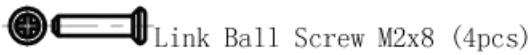
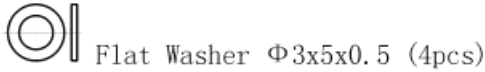


Socket Screw M3×12 (2pcs)

Pin $\Phi 2 \times L12$ (2pcs)

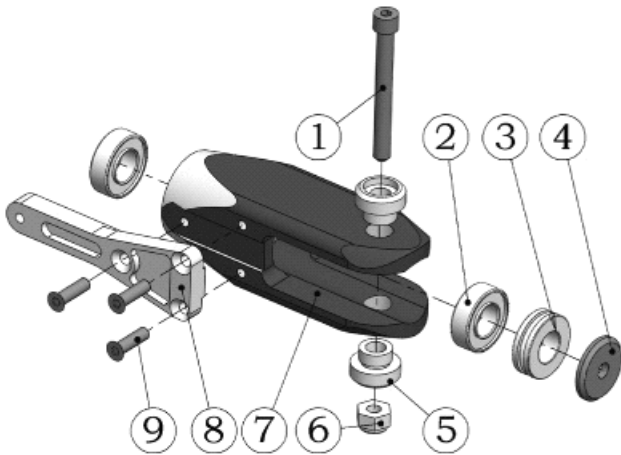
11-4 MIXING ARM ASSEMBLY

No.	Qty	Item No.	Parts Name
1	4	509-008	Link Ball Screw M2x8
2	4	122-058	Linkage Ball
3	4	521-003	Bearing d3xD8xW3
4	2	254-008	Aileron Control Lever
5	4	513-005	Flat Washer $\Phi 3 \times 5 \times 0.5$

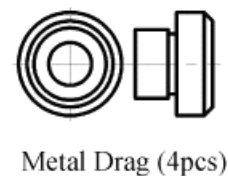
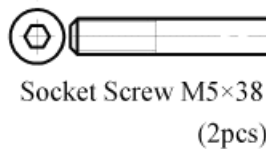


NOTE: The linkage ball (122-058) not on the same side!

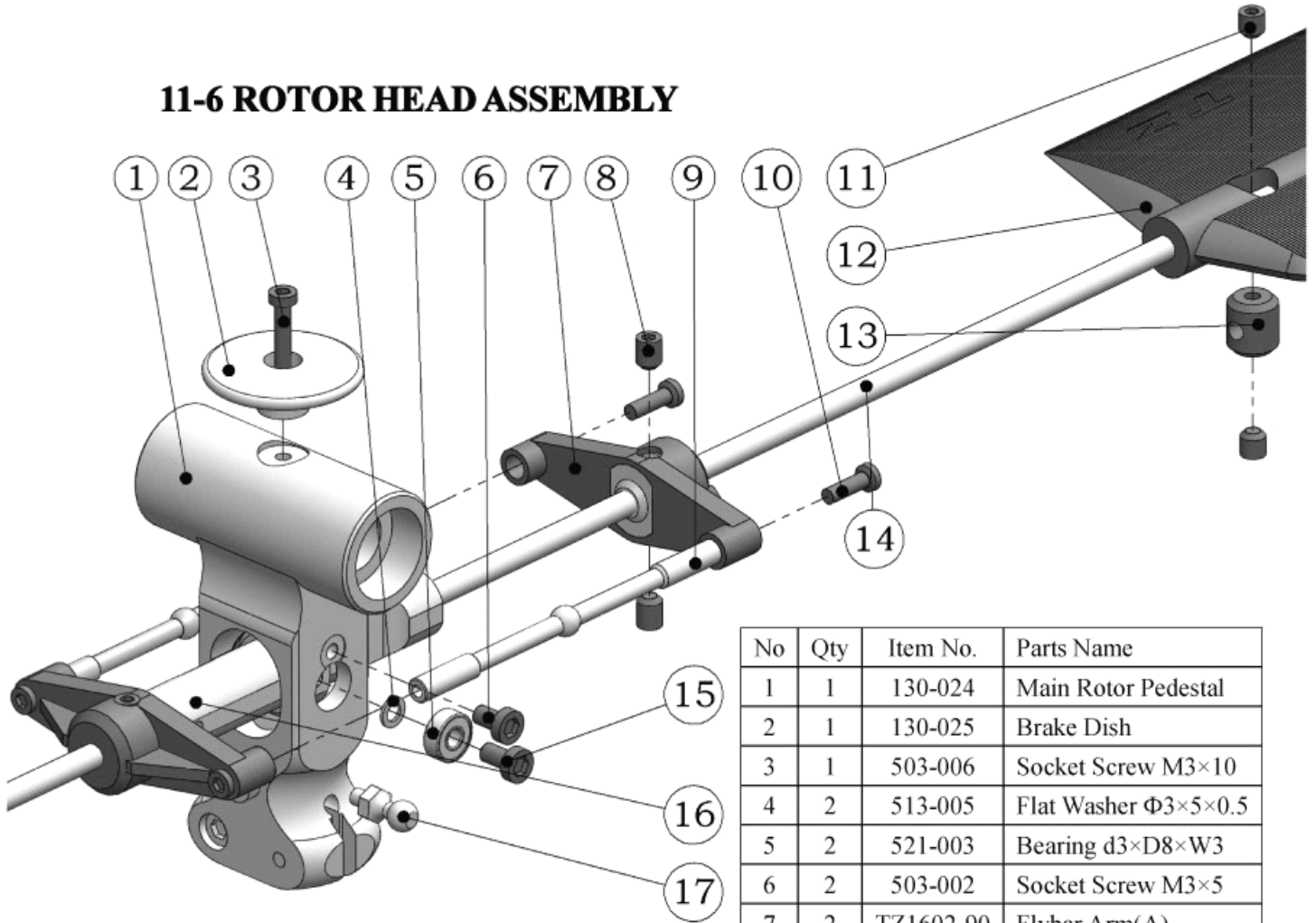
11-5 MAIN BLADE HOLDER ASSEMBLY



No	Qty	Item No	Parts Name
1	2	505-038	Socket Screw M5×38
2	4	526-006	Bearing d8×D16×W5
3	2	580-005	Thrust Bearing d8×D16×W5
4	2	129-082	Metal Washer
5	4	129-076	Metal Drag
6	2	511-003	Lock Nut M5
7	2	159-027	Metal Main Rotor Grip
8	2	130-022	Metal Main Rotor Grip Arm
9	6	519-005	Semi-Link Ball Socket Screw M3×10



11-6 ROTOR HEAD ASSEMBLY



NOTE: FLYBAR PADDLE (282-036) EDGE TO THE MAIN ROTOR PEDESTAL (130-024) CENTER DISTANCE IS ABOUT 203mm!

No	Qty	Item No.	Parts Name
1	1	130-024	Main Rotor Pedestal
2	1	130-025	Brake Dish
3	1	503-006	Socket Screw M3×10
4	2	513-005	Flat Washer Φ3×5×0.5
5	2	521-003	Bearing d3×D8×W3
6	2	503-002	Socket Screw M3×5
7	2	TZ1602-90	Flybar Arm(A)
8	4	507-025	Set Screw M4×5
9	2	154-056	Flybar Arm
10	4	502-005	Socket Screw M2.5×8
11	4	507-024	Set Screw M4×4
12	2	282-036	Flybar Paddle
13	2	152-049	Locker
14	1	130-031	FlyBar Rod
15	2	503-005	Socket Screw M3×8
16	1	TZ1802	Flybar Seesaw Hub
17	2	122-056	Linkage Ball



Socket Screw M2.5×8(4pcs)



Socket Screw M3×5(1pcs)



Socket Screw M3×8(1pcs)



Socket Screw M3×10(1pcs)



Set Screw M4×4(4pcs)



Set Screw M4×5(4pcs)



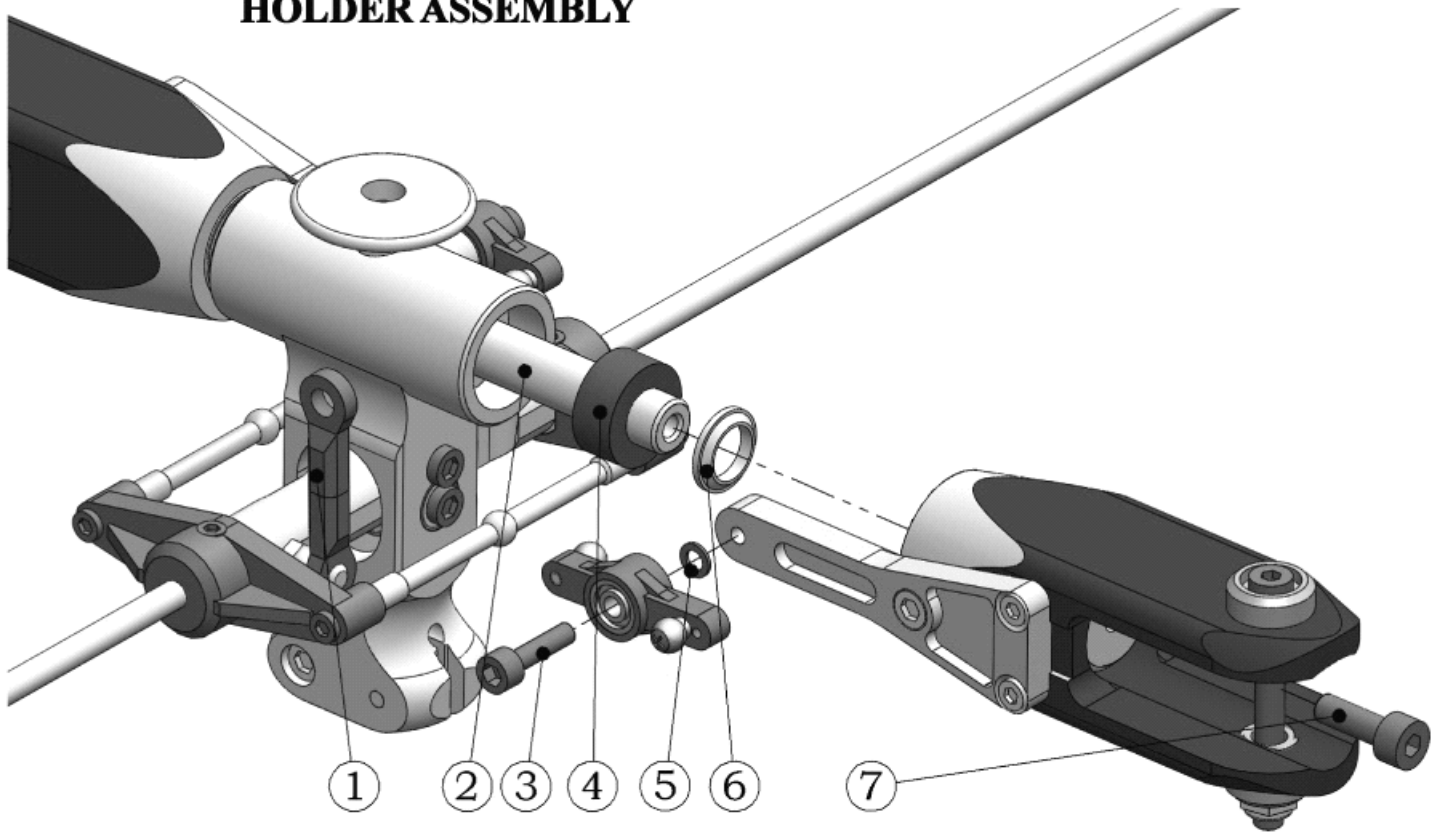
Bearing d3×D8×W3 (1pcs)



Flat Washer Φ3×5×0.5 (1pcs)

11-7 ROTOR HEAD、 MIXING ARM AND MAIN BLADE

HOLDER ASSEMBLY



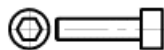
No	Qty	Item No	Parts Name
1	2	TZ1805	Mixing Arm Seesaw
2	1	130-026	Feathering Shaft
3	2	503-007	Socket Screw M3×12
4	2	290-033	Bushing Set
5	4	513-005	Flat Washer Φ3×5×0.5
6	2	129-083	Trust Collar
7	2	504-009	Socket Screw M4×12



Socket Screw M4×12(2pcs)



Flat Washer Φ3×5×0.5(2pcs)



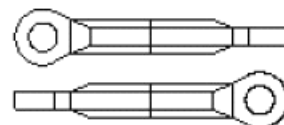
Socket Screw M3×12 (2pcs)



Bushing Set (2pcs)

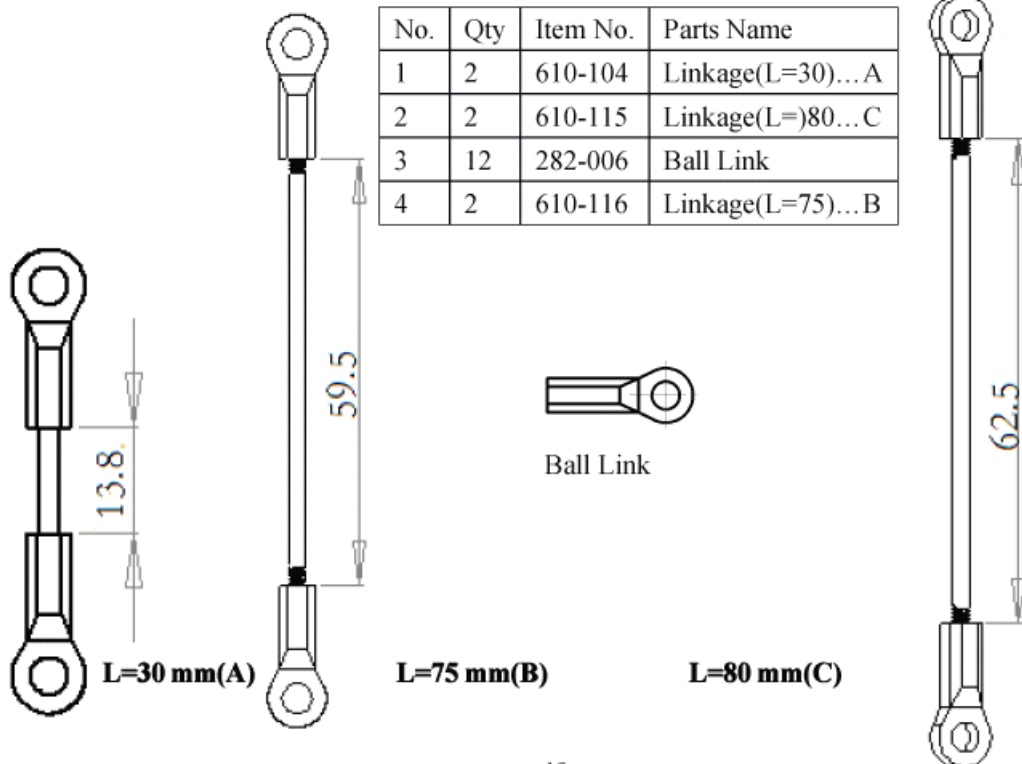
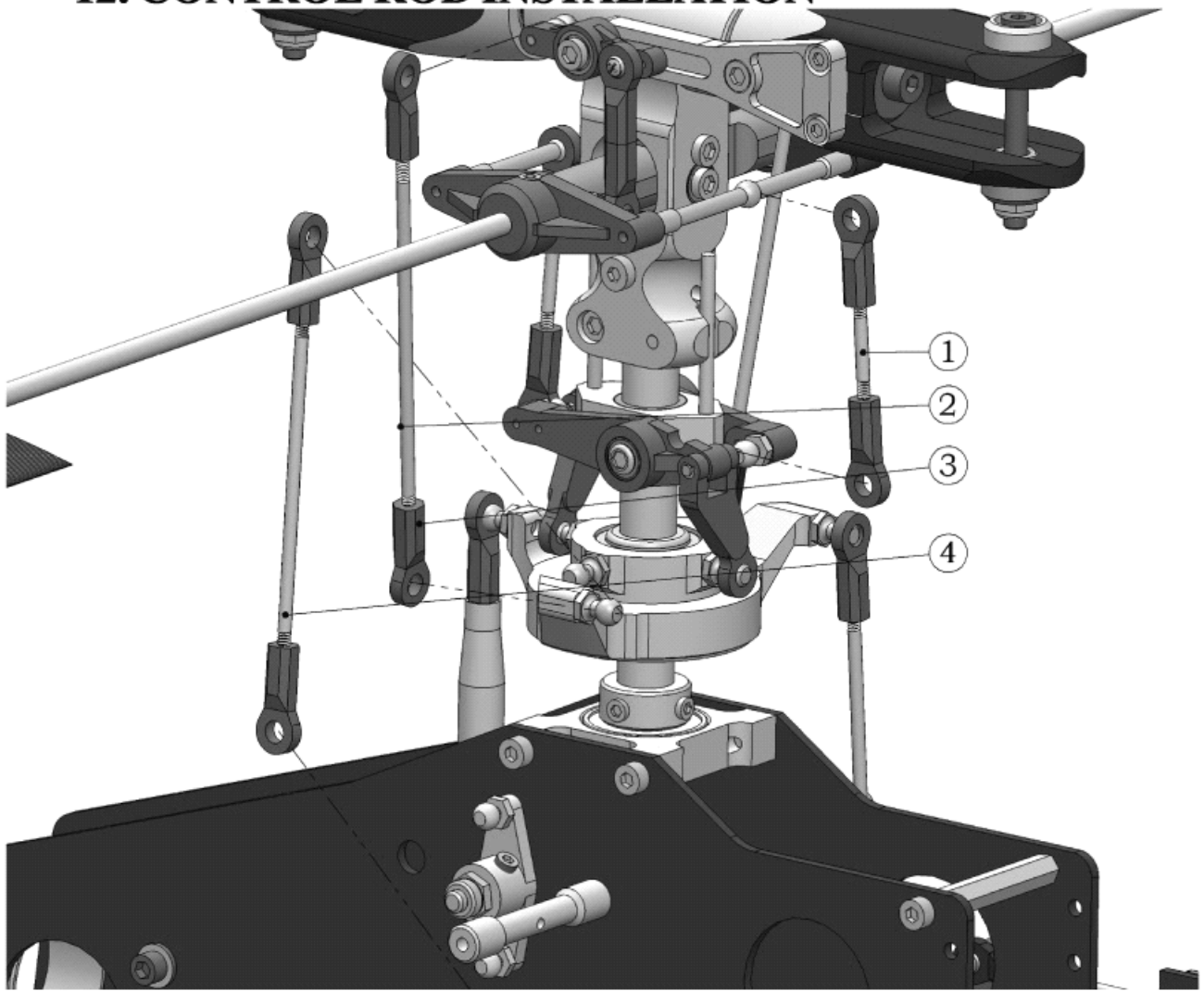


Trust Collar (2pcs)

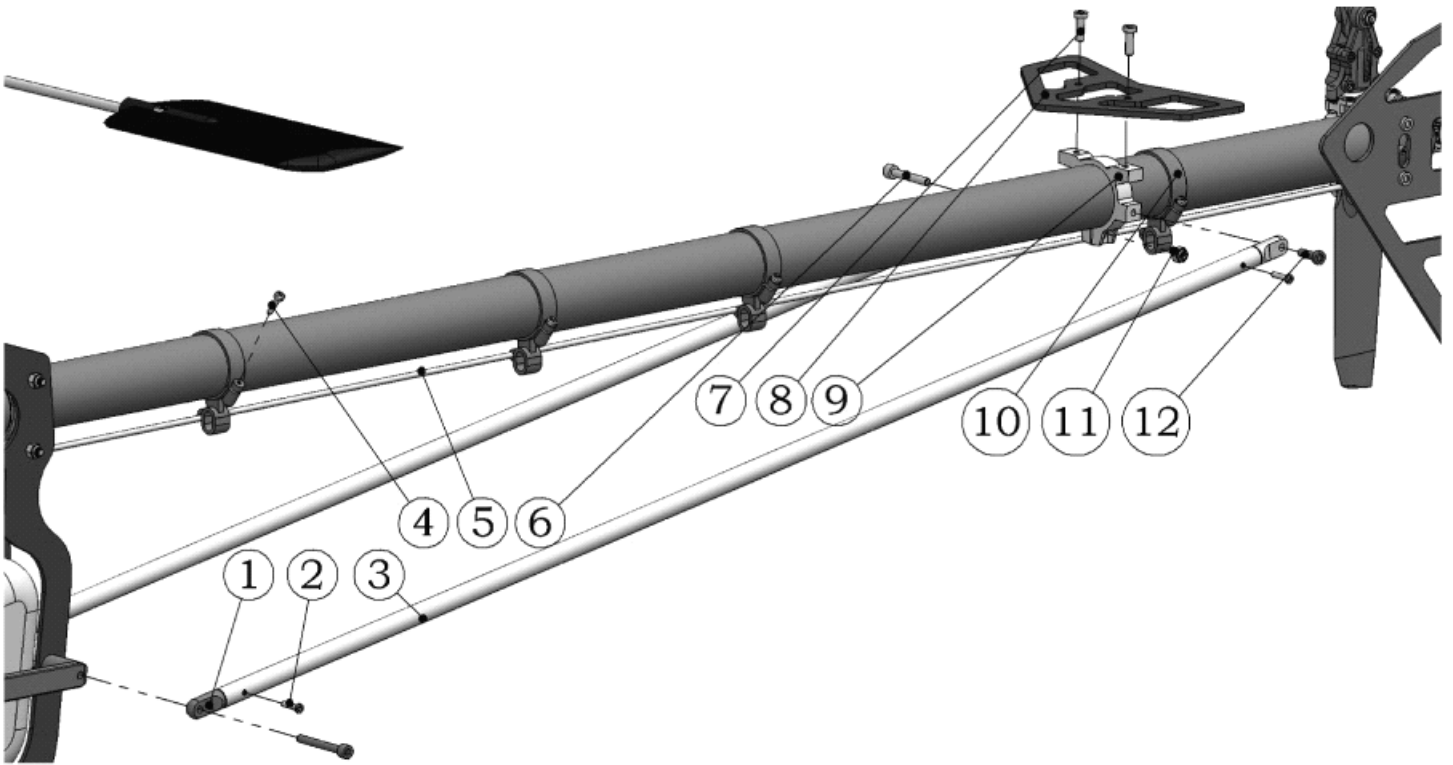


Mixing Arm Seesaw (2pcs)

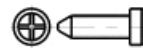
12. CONTROL ROD INSTALLATION



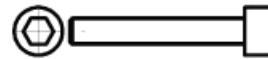
13. TAIL BOOM BRACE INSTALLATION



No.	Qty	Item No.	Parts Name
1	4	250-064	Tail Support Rod End
2	4	509-008	Link Ball Screw M2x8
3	2	129-088	Tail Support Rod
4	4	510-007	Self Tapping Screw M2x10
5	1	130-047	Linkage Rod (L=790)
6	1	503-012	Socket Screw M3x18
7	2	503-005	Socket Screw M3x8
8	1	254-016	Stabilizer Fin
9	1	129-013	Metal Level Tail Fin Mount
10	4	290-046	Tail Rod Guide
11	1	511-001	Lock Nut M3
12	2	501-002	Socket Screw M2x8



Self tapping Screw M2x10 (2pcs)



Set Screw M3x18 (1pcs)



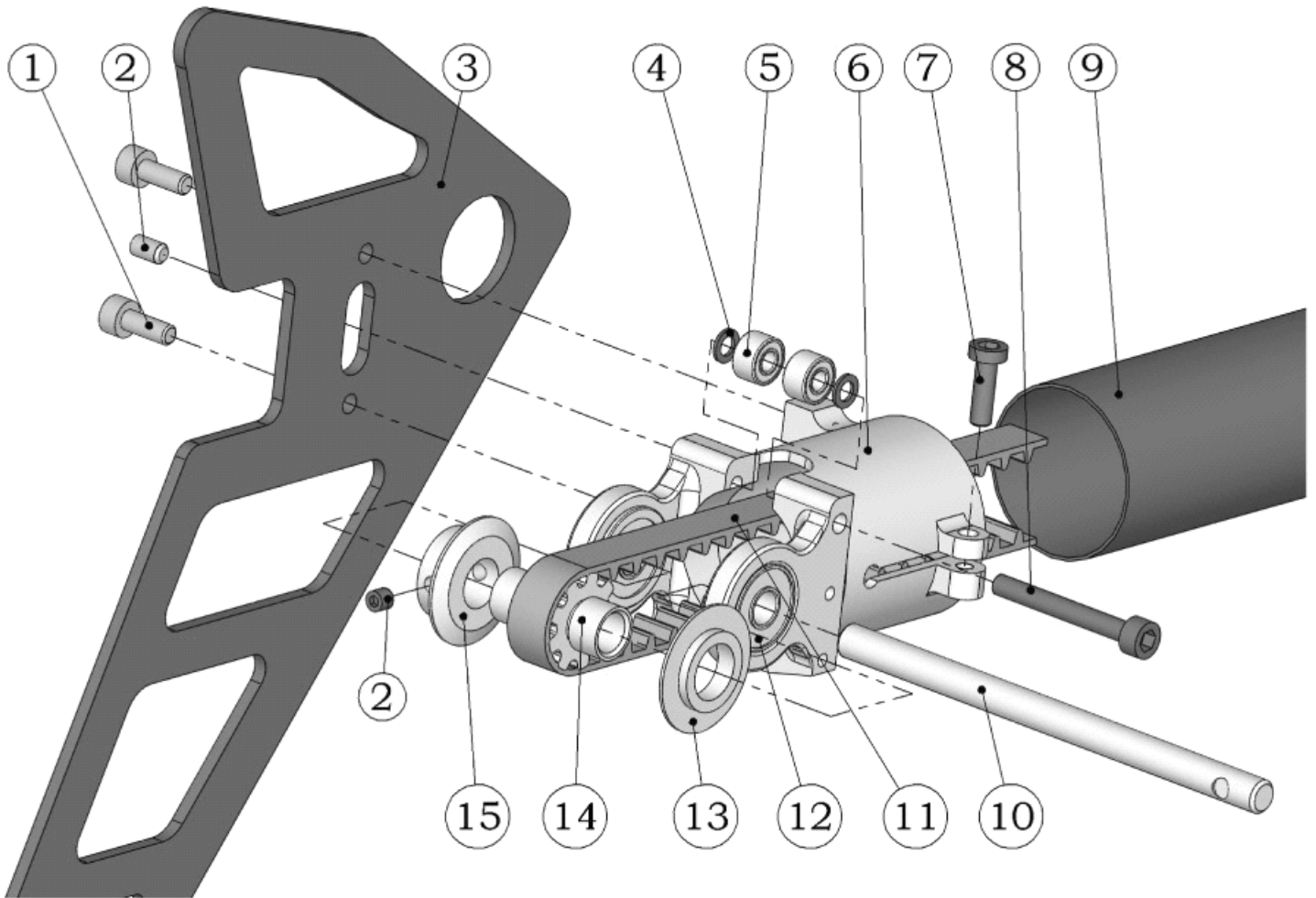
Tail Boom Brace 250-064 (4pcs)



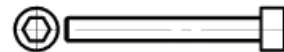
Tail Boom Brace Assembly

NOTE: Tail driving belt clockwise 90°

13-1 TAIL CASE ASSEMBLY



No	Qty	Item No	Parts Name
1	2	503-003	Socket Screw M3×6
2	3	507-003	Set Screw M3×5
3	1	130-008	Vertical Fin
4	2	513-005	Flat Washer Φ3×5×0.5
5	2	521-004	Bearing d3×D8×W4
6	1	130-027	Metal Tail Unit Housing
7	1	503-006	Socket Screw M3×10
8	1	503-018	Socket Screw M3×30
9	1	130-028	Tail Boom (Φ25.6)
10	1	130-029	Tail Rotor Shaft
11	1	282-020	Tail Drive Belt
12	2	550-031	Bearing d6×D13×W5(F)
13	1	130-034	Tail Pulley Flange(B)
14	1	130-033	Tail Pulley Set
15	1	130-032	Tail Pulley Flange(A)



Socket Screw M3×30 (1pcs)



Socket Screw M3×6 (2pcs)



Set Screw M3x5 (3pcs)

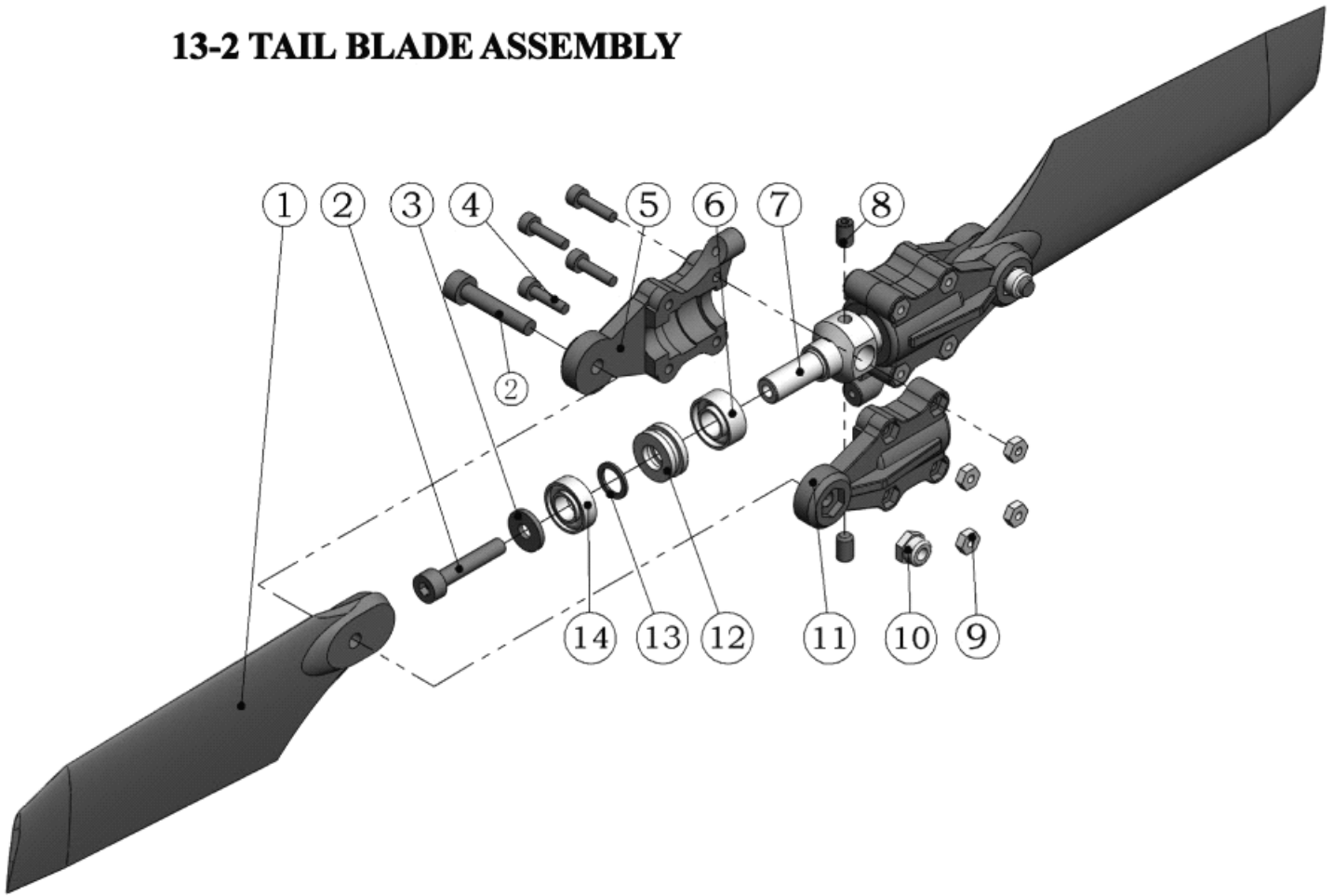


Flat Washer Φ3×5×0.5 (2pcs)



Bearing d6×D13×W5 (F) (2pcs)

13-2 TAIL BLADE ASSEMBLY



Note: The front of the tail blades and rotor grip arms are on the same side!

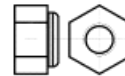
No.	Qty	Item No.	Parts Name
1	2	290-069	Tail Rotor Blade
2	4	503-003	Socket Screw M3×6
3	2	513-007	Flat Washer Φ3×6×0.5
4	8	501-003	Socket Screw M2×8
5	2	290-065	Tail Pitch Grip (A)
6	2	523-001	Bearing d5×D10×W4
7	1	152-051	Tail Rotor Hub
8	2	507-002	Set Screw M3×4
9	8	511-004	Nut M2
10	2	511-001	Lock Nut M3
11	2	290-066	Tail Pitch Grip (B)
12	2	580-002	Thrust Bearing d5×D10×W4
13	2	513-035	Flat Washer Φ5×7×0.5
14	2	523-008	Bearing d5×D10×W3



Socket Screw M2×8 (8pcs)



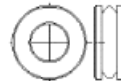
Set Screw M3×5 (2pcs)



Lock Nut M3 (2pcs)



Nut M2 (8pcs)



Thrust Bearing d5×D10×W4
(2pcs)

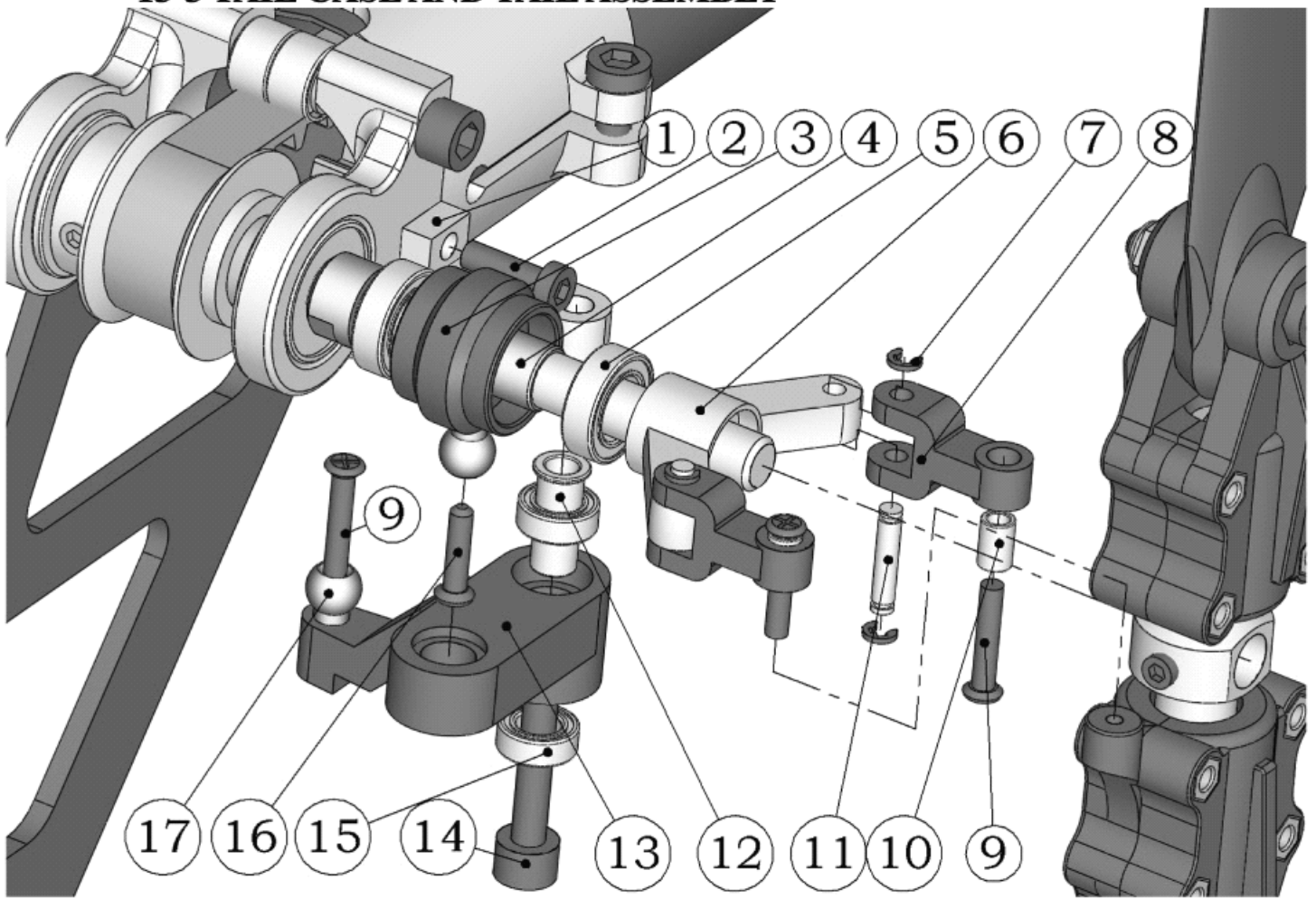


Bearing d5×D10×W4 (2pcs)



Flat Washer Φ5×7×1 (2pcs)

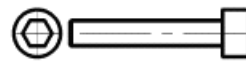
13-3 TAIL CASE AND TAIL ASSEMBLY



No.	Qty	Item No.	Parts Name
1	1	130-030	Tail Pitch Base
2	2	502-005	Socket Screw M2.5×8
3	1	152-053	Tail Pitch Control Slider
4	1	152-045	Tail Pitch Control Slide Bushing
5	2	526-001	Bearing d8×D12×W3.5
6	1	152-046	Tail Pitch Control Fork
7	4	515-009	Retaining Ring Φ2
8	2	250-027	Tail Pitch Control Link
9	3	509-010	Socket Screw M2×10
10	2	123-008	Collar d2xD3xW4.5
11	2	512-041	Pin Φ2xL9
12	1	123-002	Collar d3xD4xW10xL0.5
13	1	290-015	Tail Pitch Control Lever
14	1	503-012	Socket Screw M3×18
15	2	522-001	Bearing d4×D7×W2.5
16	1	509-008	Link Ball Screw M2x8
17	2	122-058	Linkage Ball



Bearing d4×D7×W2.5 (2pcs)



Socket Screw M3×18 (1pcs)



Linkage Ball (2pcs)



Pin Φ2xL9 (2pcs)



Link Ball Screw M2x8 (1pcs)

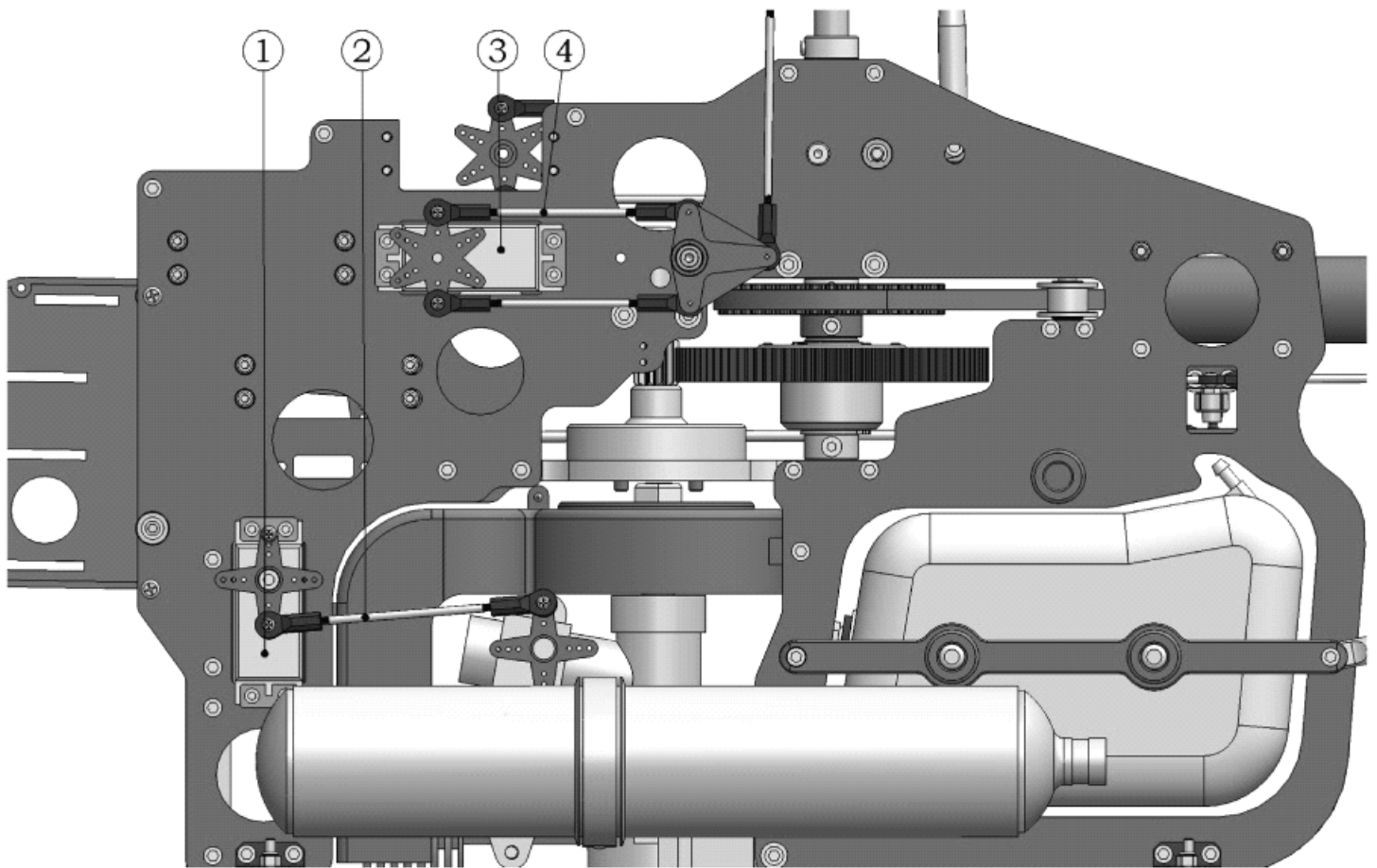


Retaining Ring Φ2 (4pcs)



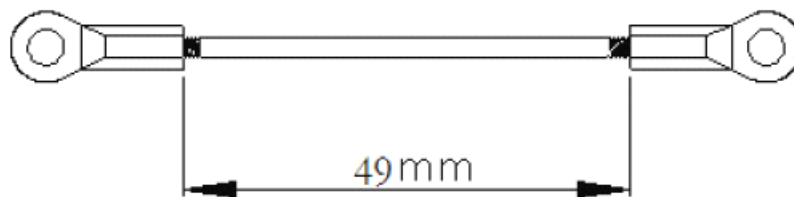
Collar d3xD4xW10xL0.5 (1pcs)

14. CONTROL ROD ASSEMBLY (L)



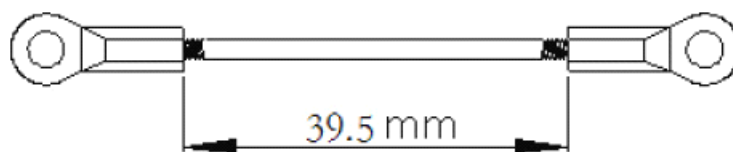
No.1 Thro servo

No.2 Thro servo Control (L=60, part no. 610-118)...D



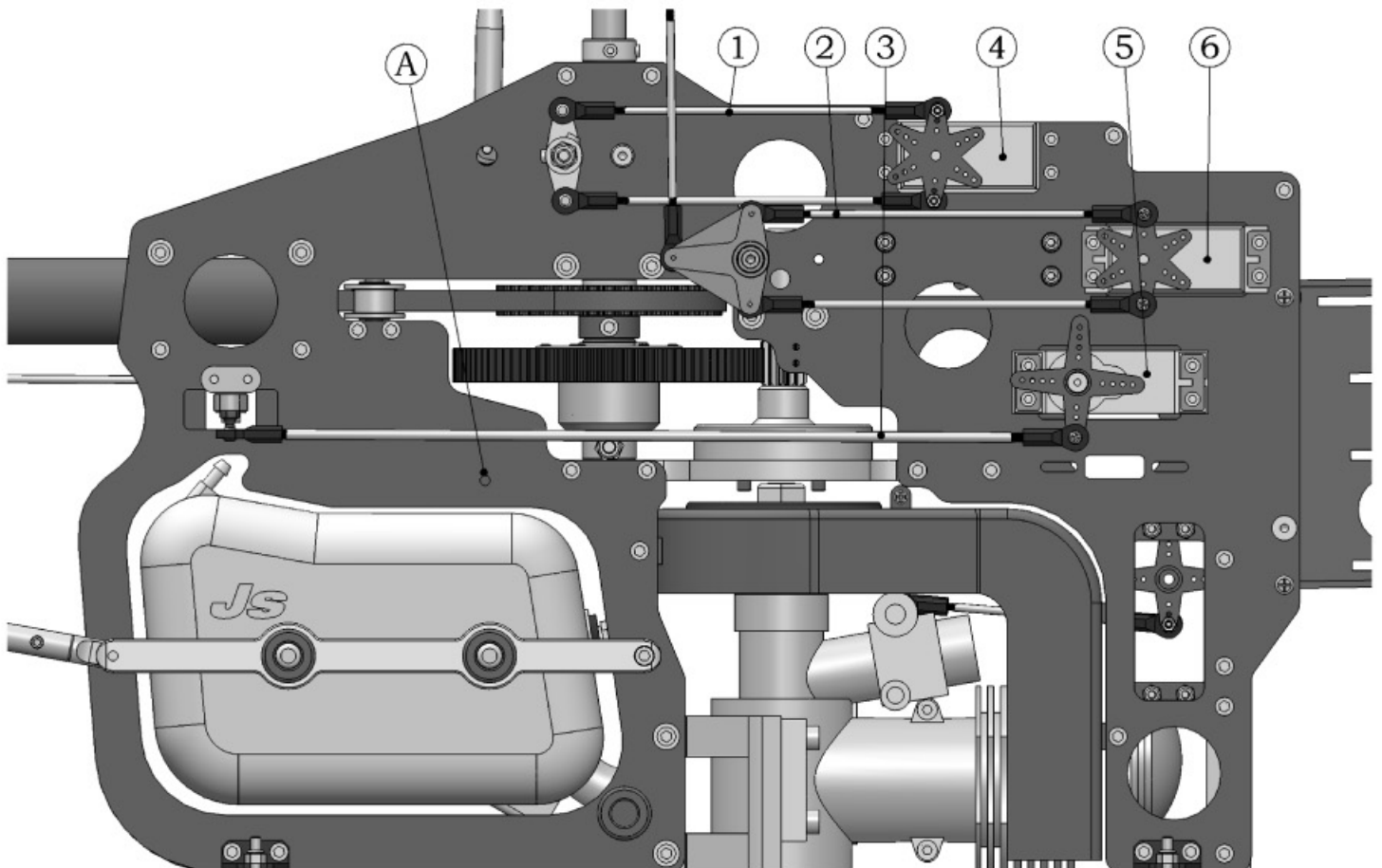
No.3 T-arm servo (L)

No.4 T-arm servo (L) Control (L=55 for 120ccpm, part no. 610-113)...E

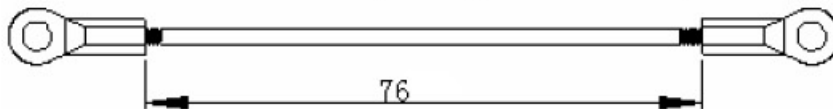


NOTE: All the control rod can be adjusted according to the actual need.

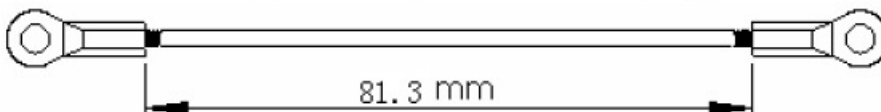
15. CONTROL ROD ASSEMBLY (R)



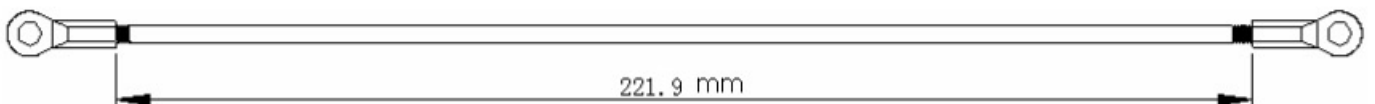
No.1 Elevator arm Control (L=95, part no. 610-117)...F



No.2 T-arm servo (R) Control (L=100 for 120ccpm, part no. 610-119)...G



No.3 Rudder Servo Control (L=235, part no. 130-043)



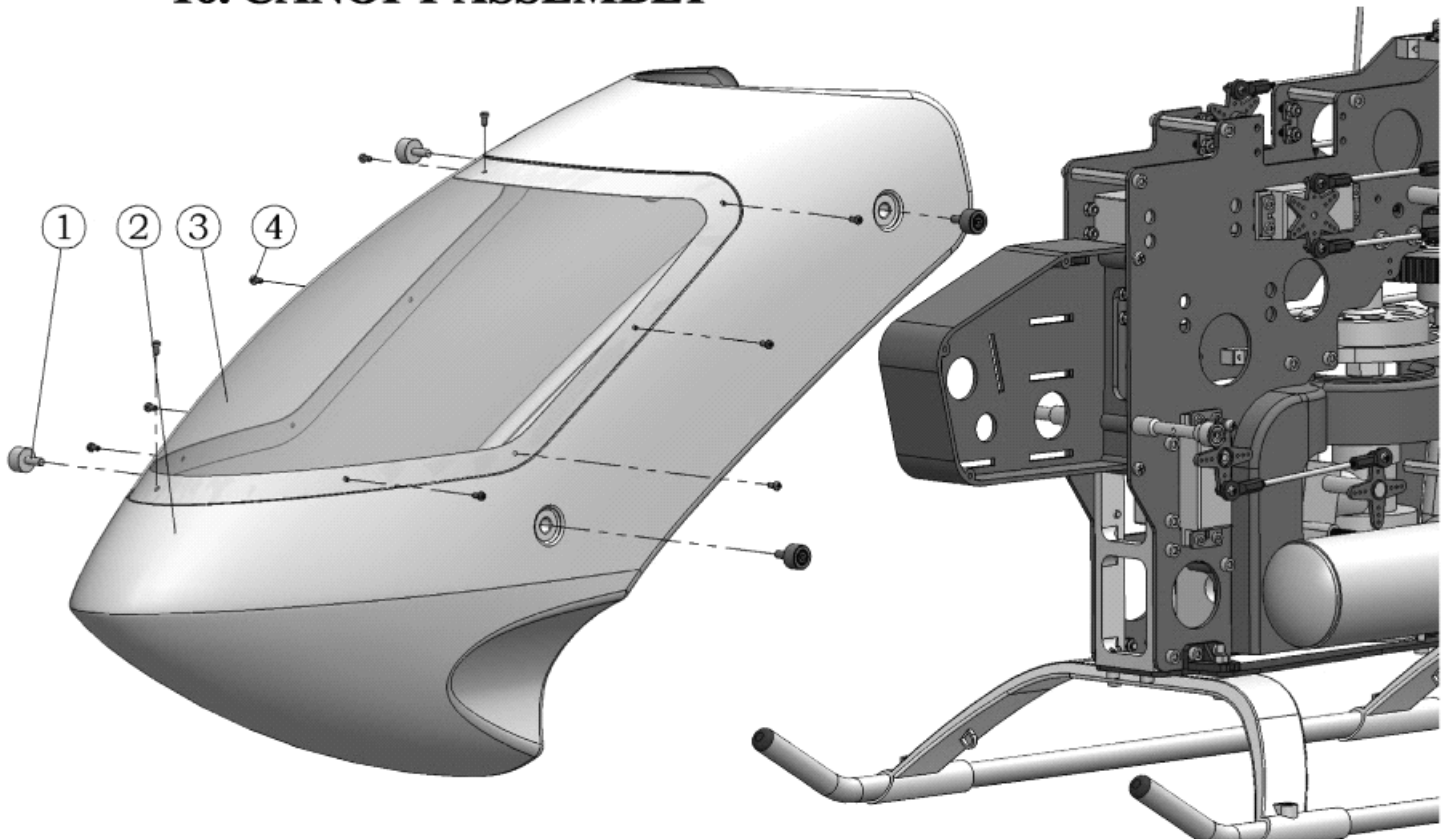
No.4 Elevator arm servo

No.5 Rudder Servo

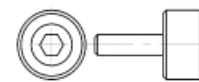
No.6 T-arm servo (R)

NOTE: THE ELEVATOR ARM SERVO ASSEMBLY FROM INSIDE TO OUTSIDE, POSITION A FOR FUSELAGE!

16. CANOPY ASSEMBLY



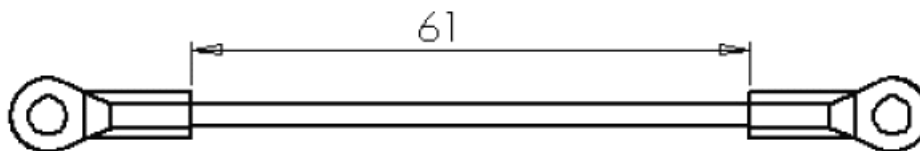
No.	Qty	Item No.	Parts Name
1	4	152-096	Canopy Cap
2	1	291-004	Body
3	1	291-003	Canopy
4	10	510-001	Self Tapping Screw M2x4



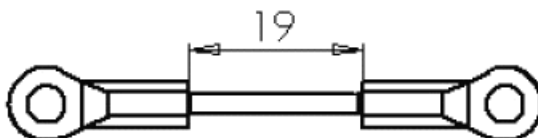
Canopy Cap (4pcs)

17. 140CCPM ROD

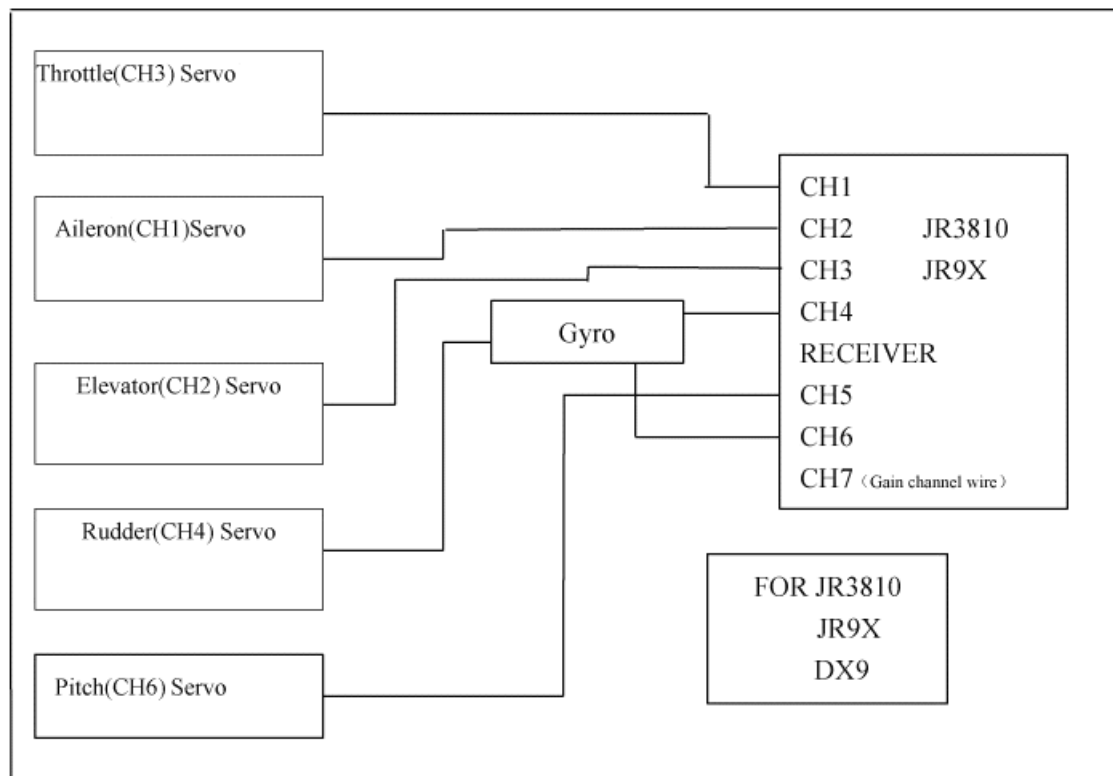
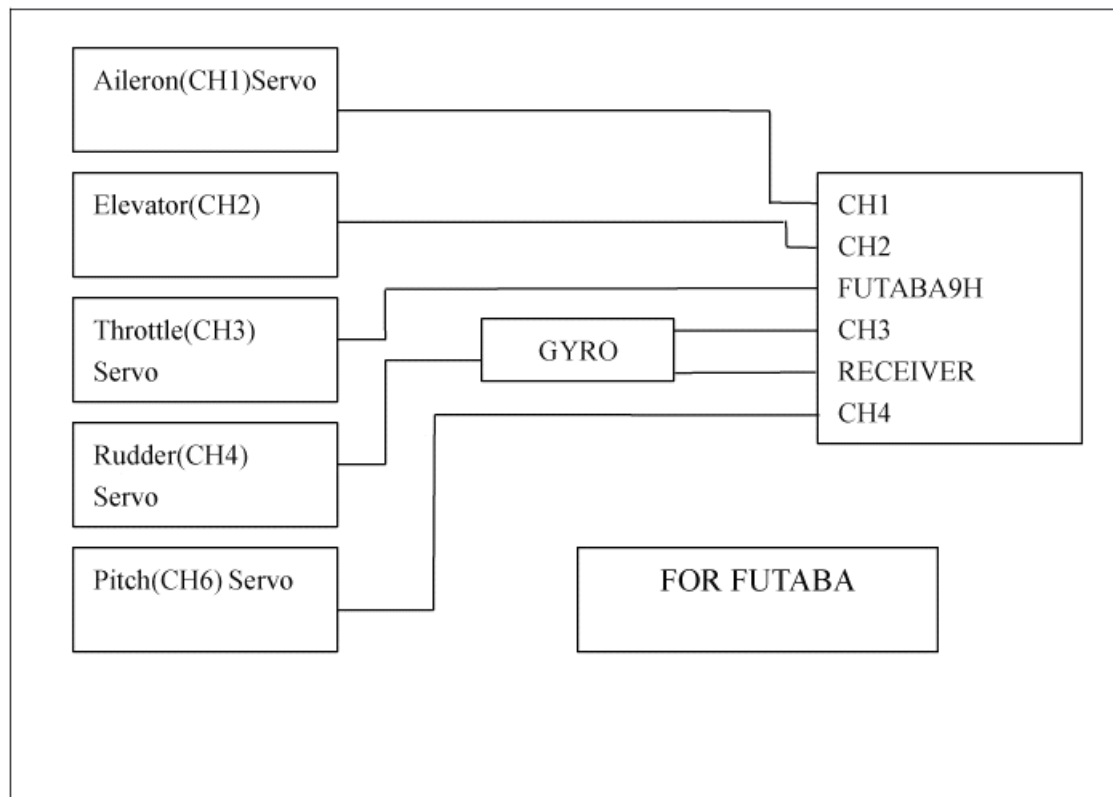
T-arm servo (R) Control (L=80 for 140ccpm, part no. 610-115)...I



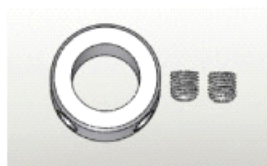
T-arm servo (L) Control (L=35 for 140ccpm, part no. 610-105)...H



18. REMOTE CONNECTION



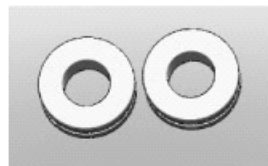
TZ V2 90 CLASS R/C HELICOPTER PARTS PICTURES



TZ0018



TZ0062



TZ0172



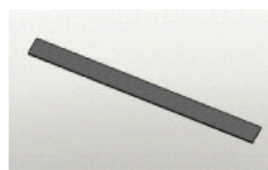
TZ0273



TZ0361



TZ1358



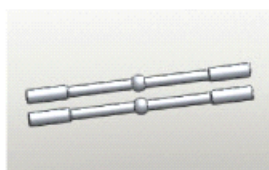
TZ1360



TZ1363



TZ1368



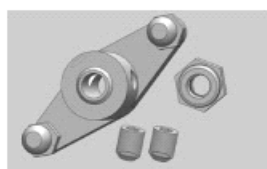
TZ1600



TZ1602 (90)



TZ1605



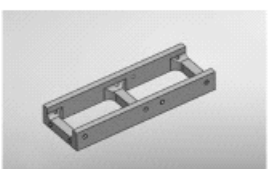
TZ1607



TZ1612



TZ1619



TZ1622



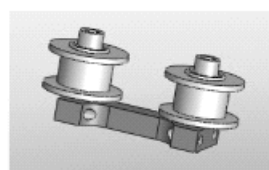
TZ1629



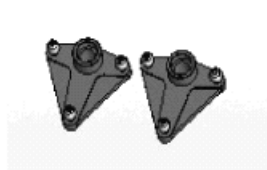
TZ1631



TZ1633



TZ1646



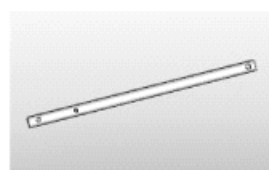
TZ1649



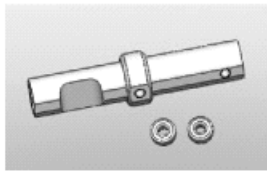
TZ1677



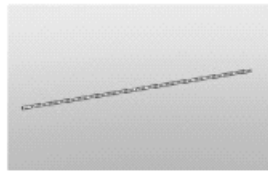
TZ1680



TZ1801



TZ1802



TZ1803



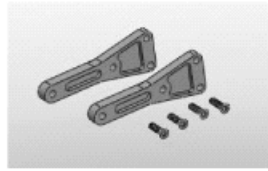
TZ1804



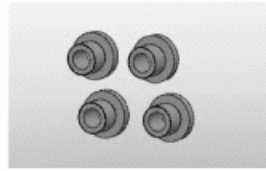
TZ1805



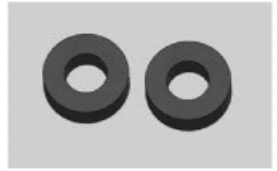
TZ1806



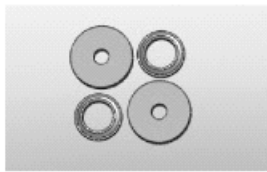
TZ1807



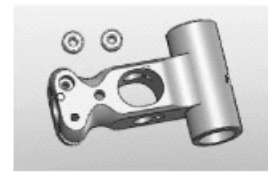
TZ1808



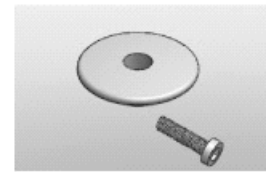
TZ1809



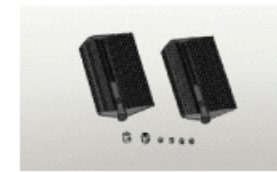
TZ1810



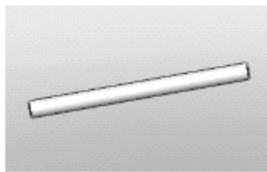
TZ1811



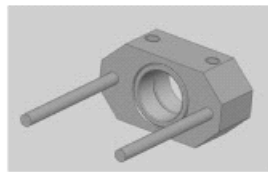
TZ1812



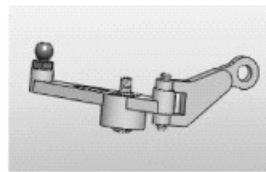
TZ1813



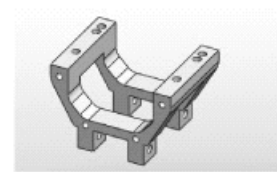
TZ1814



TZ1815



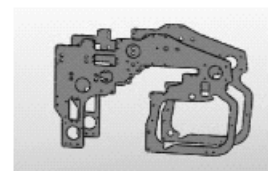
TZ1816



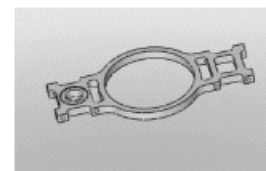
TZ1817



TZ1818



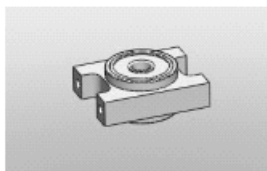
TZ1819



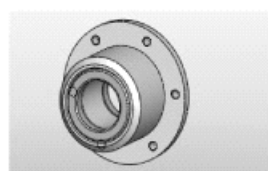
TZ1820



TZ1821



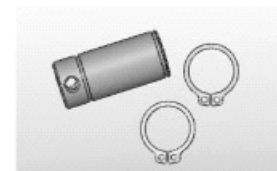
TZ1822



TZ1823



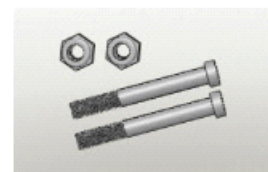
TZ1824



TZ1825



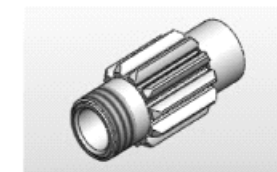
TZ1826



TZ1827



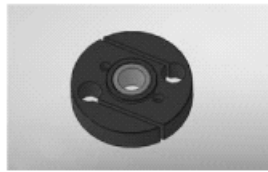
TZ1828



TZ1829



TZ1830



TZ1831



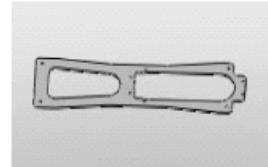
TZ1832



TZ1833



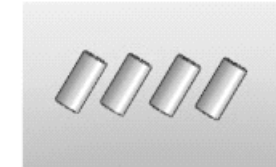
TZ1834



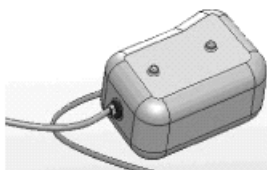
TZ1835



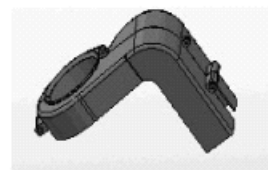
TZ1836



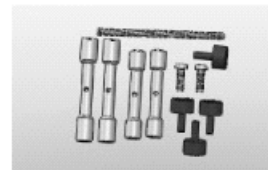
TZ1837



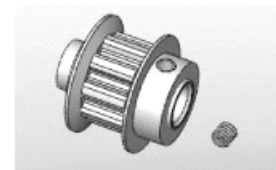
TZ1838



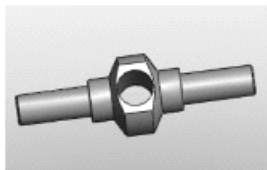
TZ1839



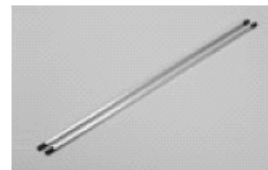
TZ1841



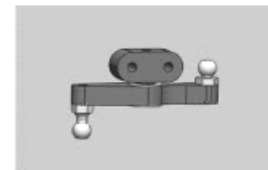
TZ1842



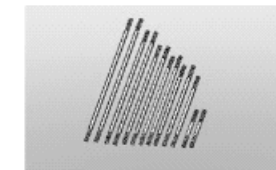
TZ1843



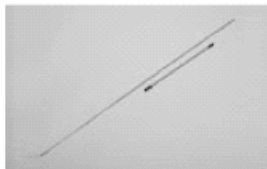
TZ1844



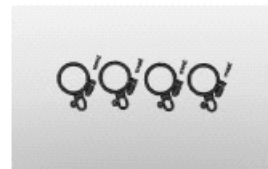
TZ1845



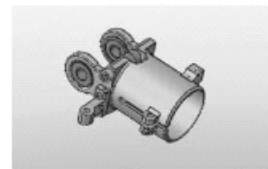
TZ1846



TZ1847



TZ1848



TZ1849



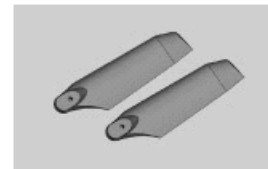
TZ1850



TZ1851



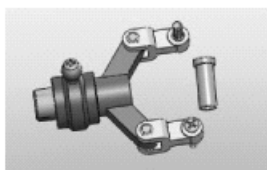
TZ1852



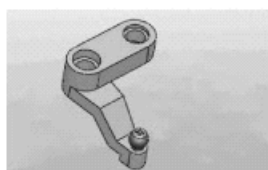
TZ1853



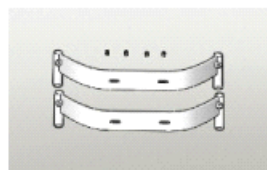
TZ1854



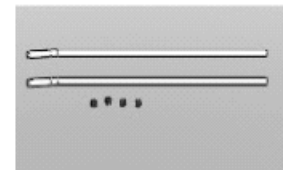
TZ1855



TZ1856



TZ1857



TZ1858



TZ1859



TZ1860



TZ1861



TZ862

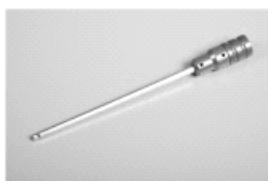


TZ1863

Tools and Upgrade Parts



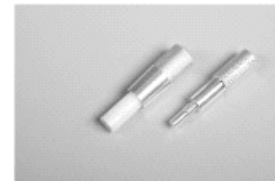
JSG2001



JSG2001-1



JSG2002



JSG2003



JSG2004



JSG2006



JSG2007



JSG2009



JSG2010



JSS1110



JSS1024



JSS1025



JSS1113



JSS1114



JSS1115



JSS1116

TZ V2 90 CLASS R/C HELICOPTER PARTS LIST

PARTS NO.	PARTS NAME	ITEM NO.	DESCRIPTION	QTY
TZ0018	Main Shaft Lock Ring	122-018	Main Shaft Lock Ring	1
		507-024	Set Screw, M4×4	2
TZ0062	Body Mount Rubber Grommet	290-007	Body Mount Rubber	4
TZ0172	Thrust Bearing	580-005	Thrust Bearing d8×D16×5	2
TZ0273	Tail Rotor Grip	290-065	Tail Pitch Housing(A)	2
		290-066	Tail Pitch Housing(B)	2
		501-003	Socket Screw, M2×8	8
		511-004	Lock Nut, M2	8
		503-010	Socket Screw, M3×16	2
		511-001	Lock Nut, M3	2
TZ0361	Starter Coupling	122-080	Starter Coupling	1
TZ1358	Tail Drive Belt	282-020	Tail Drive Belt	1
TZ1360	Clutch Liner	290-045	Clutch Liner	1
TZ1363	Servo Mounting Plate	700-067	Servo Mounting Plate	12
TZ1368	Antenna Tube	250-052	Antenna Tube	1
TZ1600	Flybar Arm	154-056	Flybar Arm	2
TZ1602 (90)	Flybar Arm(A)	254-009	Aileron Arm (A)	2
		130-041	Flybar Arm(B)	2
		507-025	Set Screw, M4×5	4
TZ1605	Elevator Arm	154-021	Elevator Arm	1
		154-067	Control Lever Shaft	1
		550-005	Bearing d4xD8xW3 (F)	2
		515-010	Retaining Ring Ø4	1
		507-025	Set Screw, M4×5	2
TZ1607	Elevate Arm(B)	154-061	Elevate Arm(B)	1
		122-056	Linkage Ball (L)	2
		511-002	Lock Nut M4	1
		507-025	Set Screw, M4×5	2
TZ1612	Ball Link	282-006	Ball Link	10
TZ1619	Metal Frame Spacer	154-049	Metal Frame Spacer	8
TZ1622	U-Beamcross Member	154-046	U-Beamcross Member	1
TZ1629	Landing Struts Adapter	254-011	Landing Struts Adapter	4
TZ1631	Tail Support Rod End	250-064	Tail Support Rod End	4
TZ1633	Fuel Tank Rubber Grommet	290-059	Fuel Tank Rubber Grommet	4
TZ1646	Guide Pulley Assy	154-026	Pulley Assy Mount	1

PARTS NO.	PARTS NAME	ITEM NO.	DESCRIPTION	QTY
		123-013	Collar d3xD4xW11.2xL0.5	2
		550-005	Bearing d4xD8xW3 (F)	4
		152-014	Guide Pulley	2
TZ1649	Control lever	254-015	Control lever	2
		122-058	Linkage Ball	6
		509-008	Link Ball Screw, M2×8	6
TZ1677	Main Frame Grommet	290-073	Main Frame Grommet	2
TZ1680	Frame	254-026	Frame	1
TZ1801	Main Shaft	130-016	Main Shaft	1
TZ1802	Flybar Screw Hub	130-023	Flybar Screw Hub	1
		522-002	Bearing d4xD8xW3	2
TZ1803	Flybar Rod	130-031	Flybar Rod	1
TZ1804	Cooling Fan Assy	290-006	Cooling Fan Assy(90)	1
		129-024	Cooling Fan Assy Mount	1
		504-007	Socket Screw, M4×10	2
TZ1805	Flybar Control Rod	611-020	Flybar Control Rod	2
		282-006	Ball Link	4
TZ1806	Metal Main Rotor Hub	159-027	Metal Main Rotor Grip	2
		130-022	Metal Main Rotor Grip Arm	2
		526-006	Bearing d8×D16×W5	4
		580-005	Thrust Bearing d8×D16×W5	2
TZ1807	Metal Main Rotor Grip Arm	519-005	Semi-Link Ball Socket Screw M3×10	6
		130-022	Metal Main Rotor Grip Arm	2
TZ1808	Metal Drag	129-076	Metal Drag	4
TZ1809	Bushing Set	290-033	Bushing (d8×D16×W5)	2
TZ1810	Trust Collar	129-083	Flat Washer (F) Ø8×14×2	2
		129-082	Metal Washer	2
TZ1811	Main Rotor Pedestal	130-024	Main Rotor Pedestal	1
		521-003	Bearing, d3×D8×3	2
TZ1812	Metal Brake Dish	130-025	Metal Brake Dish	1
		503-007	Socket Screw, M3×12	1
TZ1813	Flybar Paddle	282-036	Flybar Paddle	2
		152-049	Locker	2
		507-024	Set Screw, M4×4	4
TZ1814	Feathering Shaft	130-026	Feathering Shaft	1
TZ1815	Metal Washout Base	130-042	Metal Washout Base(Include steel set)	1
		154-066	Locate staff	2

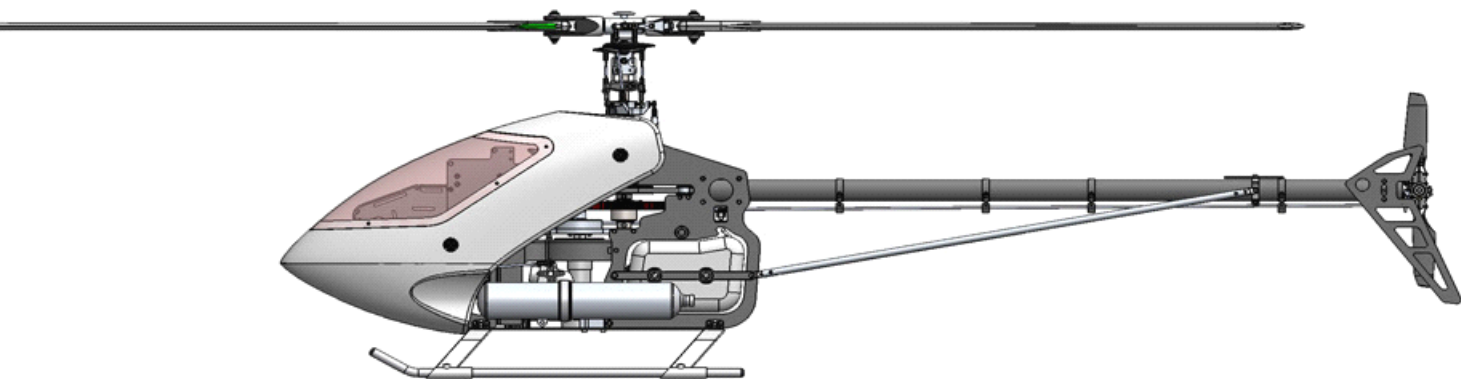
PARTS NO.	PARTS NAME	ITEM NO.	DESCRIPTION	QTY
TZ1816	Flybar Control Lever	254-007	Flybar Control Lever	2
		250-013	Washout Linkage	2
		512-042	Pin $\Phi 2 \times L12$	2
		515-009	Retaining Ring $\Phi 2$	4
		122-056	Stainless Steel Linkage Ball	2
		123-001	Collar $d3 \times D4 \times W8.5 \times L0.5$	2
		506-009	Socket Screw $M3 \times 12$	2
TZ1817	Engine Mount	130-015	Engine Mount	1
TZ1818	Swash Plate Assy (for 120ccpm)	154-063	Metal Swash Plate Assy	1
		130-049	Under Swash Plate	1
		570-002	Joint Bearing $d10 \times D19 \times W6$	1
		529-005	Bearing $d25 \times D37 \times W7$	1
		130-021	Stainless Steel Linkage Ball	4
		130-036	Stainless Steel Linkage Ball	2
		122-108	Stainless Steel Linkage Ball	1
TZ1819	Main Frame	130-037	Main Frame (R)	1
		130-038	Main Frame (L)	1
TZ1820	Strengthen Main Shaft Bearing Case	130-039	Strengthen Main Shaft Bearing Case	1
		528-002	Bearing, $d10 \times D19 \times W5$	1
TZ1821	Main Shaft Bearing Case (B)	130-040	Main Shaft Bearing Case	2
		528-006	Bearing, $d10 \times D22 \times W6$	2
TZ1822	Start Shaft Bearing Block	130-005	Start Shaft Bearing Block	1
		524-009	Bearing, $d6 \times D19 \times W6$	1
		528-008	Bearing, $d10 \times D19 \times W7$	1
TZ1823	One Way Clutch Housing Set	129-017	One Way Clutch Housing Set	1
		130-017	Copper Shim $d16 \times D23 \times W4$	2
		560-005	One Way Bearing, $d16 \times D22 \times W16$	1
TZ1824	Drive Pulley	285-022	Drive Pulley (42T)	1
TZ1825	One Way Clutch Shaft	514-006	Retaining Ting $\Phi 15$	2
		130-045	One Way Clutch Shaft $d10 \times D16 \times L36$	1
TZ1826	Main Spur Gear	290-063	Main Spur Gear (91T)	1
TZ1827	Rotor Bolt.	505-038	Socket Screw $M5 \times 38$	2
		511-003	Lock Nut M5	2
TZ1828	Control lever	130-011	Control lever	1
		550-005	Bearing $d4 \times D8 \times W3$ (F)	2
		123-011	Collar $d3 \times D4 \times W9.2 \times L0.5$	1
		513-005	Flat Washer $\Phi 3 \times 5 \times 0.5$	1
		507-018	Set Screw, $M3 \times 20$	1

PARTS NO.	PARTS NAME	ITEM NO.	DESCRIPTION	
		282-006	Ball Link	1
TZ1829	Drive Gear	130-006	Drive Gear (11T)	1
TZ1830	Clutch Liner	129-056	Clutch liner	1
		524-005	Bearing, d6×D13×W5	1
TZ1831	Clutch	130-018	Clutch	1
		560-002	d10×D 14×W 12	1
TZ1832	Starter Shaft	130-007	Starter Shaft	1
		507-025	Set Screw, M4×5	2
TZ1833	Level Tail Fin Mount	129-013	Level Tail Fin Mount	1
TZ1834	Stainless Steel Linkage Ball (For 140ccpm)	130-035	Stainless Steel Linkage Ball (For 140ccpm)	2
TZ1835	Base Plate	130-019	Base Plate	1
TZ1836	Tank Stay	130-012	Tank Stay	2
TZ1837	Fuel Tank Support Pillar	130-013	Fuel Tank Support Pillar	4
TZ1838	Fuel Tank	290-041	Fuel Tank	1
		250-078	Fuel Tank Grommet	1
		152-033	Fuel Tank Nipple	1
		122-083	Clunk	1
		250-081	Silicone Fuel Tube (3×1.5)	1
		511-008	Lock Nut, M5	1
		513-033	Flat Washer Φ5x8x1	1
TZ1839	Fan Shroud Set	291-001	Fan Shroud Set (R)	1
		291-002	Fan Shroud Set (L)	1
		510-017	Self tapping Screw, M2.5×8	2
TZ1841	Body Catch	155-029	Body Catch L=46	2
		130-014	Body Mount Post M3x56	1
		152-028	Body Catch L=39	2
		503-006	Socket Screw M3x10	2
		152-096	Canopy Cap	4
TZ1842	Tail Pulley Set	130-034	Tail Pulley Flange	1
		130-033	Tail Pulley Set	1
		130-032	Tail Pulley Flange	1
		507-003	Set Screw M3×5	2
TZ1843	Tail Rotor Hub	152-051	Tail Rotor Hub (90)	1
TZ1844	Tail Support Rod	129-088	Tail Support Rod (90)	2
		250-064	Tail Support Rod End	4
		509-008	Link Ball Screw M2x8	4
TZ1845	Bell Crank	254-022	Bell Crank	1

PARTS NO.	PARTS NAME	ITEM NO.	DESCRIPTION	QTY
		254-031	Mounting Bracket	1
		550-004	Bearing d3xD7xW3(F)	2
		513-005	Flat Washer $\Phi 3 \times 5 \times 0.5$	2
		122-108	Stainless Steel Linkage Ball	1
		122-056	Stainless Steel Linkage Ball	1
TZ1846	Link Rod	610-104	Linkage Rod(L=30)	2
		610-113	Linkage Rod(L=55)	2
		610-117	Linkage Rod(L=95)	2
		610-115	Linkage Rod(L=80)	2
		610-116	Linkage Rod(L=75)	2
		610-118	Linkage Rod(L=60)	1
		610-119	Linkage Rod(L=100)	2
TZ1847	Pulley Pull Rod	130-043	Pulley Pull Rod(235mm)	1
		130-047	Pulley Pull Rod(790mm)	1
TZ1848	Tail Rod Guide	290-046	Rod Guide	4
		510-007	Self tapping Screw, M2 \times 10	4
TZ1849	Metal Tail Unit Housing	130-027	Metal Tail Unit Housing	1
		513-005	Flat Washer $\Phi 3 \times 5 \times 0.5$	2
		521-004	Bearing d3 \times D8 \times W4	2
		502-005	Socket Screw M2.5 \times 8	2
		130-030	Tail Pitch Base	1
		550-031	Bearing d6 \times D13 \times W5(F)	2
		503-018	Socket Screw M3 \times 30	1
TZ1850	Tail Boom	130-028	Tail Boom ($\Phi 25.6$)	1
TZ1851	Tail Boom Holder	130-009	Tail Boom Holder	2
TZ1852	Tail Rotor Shaft	130-029	Tail Rotor Shaft	1
TZ1853	Tail Rotor Blade	290-069	Tail Rotor Blade	2
TZ1854	140CCPM Rod	610-115	Linkage Rod(L=80)	2
		610-105	Linkage Rod(L=35)	2
		282-006	Ball link	8
TZ1855	Tail Pitch Slider	152-046	Tail pitch Control Fork	1
		250-027	Tail pitch Control Linkage	2
		152-053	Tail pitch Control Slider	1
		509-008	Link Ball Screw, M2 \times 8	1
		509-010	Link Ball Screw, M2 \times 10	2
		123-008	Collar d2 \times D3 \times L4.5	2
		123-002	Collar d3 \times D4 \times 10 \times L0.5	1
		526-001	Bearing, d8 \times D12 \times W3.5	2

PARTS NO.	PARTS NAME	ITEM NO.	DESCRIPTION	QTY
		512-041	Pin, Ø2×9	2
		515-009	Retaining Ring ,Ø2	4
		122-058	Linkage Ball	1
		154-075	Tail pitch Control Slide Bushing	1
TZ1856	Tail Pitch Control Lever	290-015	Tail Pitch Control Lever	1
		122-058	Linkage Ball	1
		509-010	Link Ball Screw, M2×10	1
TZ1857	Skid Brace	282-010	Skid Brace	2
		507-026	Set Screw, M4×6	4
TZ1858	Skid Lever	130-020	Skid Lever	2
		290-035	Skid Cap	4
TZ1859	Tail Fin	254-016	Stabilizer Tail Fin	1
		130-008	Vertical Tail Fin	1
TZ1860	Aileron Control Lever	254-008	Aileron Control Lever	2
		521-003	Bearing d3xD8xW3	4
		122-058	Linkage Ball	4
		509-008	Link Ball Screw M2×8	4
TZ1861	Y. S Cooling Fan	290-006	Y. S Cooling Fan	1
		130-051	Y. S Cooling Fan Assy Mount	1
		504-007	Socket Screw M4×10	2
TZ1862	Tank Stay	254-038	Tank Stay	2
TZ1863	Canopy	291-003	Canopy	1
		291-004	Body	1
		510-001	Self Tapping Screw M2x4	10
JSG2001	Extended 6mmhex starting tool	JSG2001	Extended 6mmhex starting tool	1
JSG2001-1	Starter Extension (include One Way Bearing)	JSG2001-1	Starter Extension (incl. One Way Bearing)	1
JSG2002	Precision Pitch Gauge	JSG2002	Precision Pitch Gauge	2
JSG2003	Piston and rod end set tools	JSG2003	Piston and rod end set tools	1
JSG2004	Hex Wrench Drivers	JSG2004	Hex Wrench Drivers	1
JSG2006	Blade Support (For60-90Class)	JSG2006	Blade Support (For60-90Class)	1
JSG2007	Fuel Tube Grip	JSG2007	Fuel Tube Grip	2
JSG2009	Magic Belt	JSG2009	Magic Belt	2
JSG2010	Connector Wire	JSG2010	Connector Wire	4
JSS1024	Carbon Fiber Tail Boom	JSS1024	Carbon Fiber Tail Boom	1
JSS1025	Carbon Fiber Tail Support	JSS1025	Carbon Fiber Tail Support	2
JSS1101	Aileron Control Lever	154-095	Aileron Control Lever	2

PARTS NO.	PARTS NAME	ITEM NO.	DESCRIPTION	QTY
		521-003	Bearing d3xD8xW3	4
		122-058	Linkage Ball	4
		509-008	Link Ball Screw, M2×8	4
JSS1110	Muffler	JSS1110	Muffler	1
JSS1113	Carbon Fiber Tail Fin	130-051	Carbon Fiber Stabilizer Tail Fin	1
		130-052	Carbon Fiber Vertical Tail Fin	1
JSS1114	Carbon Fiber Main Frame	130-053	Carbon Fiber Main Frame(R)	1
		130-054	Carbon Fiber Main Frame(L)	1
JSS1115	Base Plate	JSS1115	Base Plate	1
JSS1116	Flybaless Head	154-106	Metal Flybarless Control	2
		522-002	Bearing, d4×D8×W3	4
		250-013	Washout Linkage	2
		512-042	Pin Ø2×12	2
		515-009	Retaining Ring Ø2	4
		506-009	Socket Screw, M3×12	2
		507-003	Set Screw, M3×5	2
		129-083	Trust Collar	2
		610-115	Linkage Rod(L=80)	2
		282-006	Ball Link	4
		159-027	Main Rotor Grip Metal	2
		526-006	Bearing, d8×D16×5	4
		130-053	Main Rotor Grip Metal	2
		129-076	Main Rotor Grip Screw	4
		580-005	Thrust Bearing d8×D16×W5	2
		504-009	Socket Screw, M4×12	2
		130-026	Feathering Shaft	1
		129-082	Metal Washer	2
		130-025	Brake Dish	2
		122-108	Stainless Steel Linkage Ball	2
		519-005	Counter Sink Socket ScrewM3x10	6
		154-105	Washout Base Metal	1
		130-052	Main Rotor Pedestal	1



MADE IN CHENGDU, CHINA

CHENGDU JINGSHI R/C MODEL DEVELOPMENT CO., LTD

ADD: UNIT NO, 14TH, EAST SEGMENT 3 RING ROAD, CHENGDU CHINA

TEL: 0086 28 84362666 0086 28 84363666

FAX: 0086 28 84362666

POSTCODE: 610051

EMAIL: jingshimodel@vip.163.com

<http://www.jsmodel.com>

(All product descriptions and specifications are subject to change without notice.)